

# Monthly Treasury Statement

## Receipts and Outlays of the United States Government

For Fiscal Year 2020 Through January 31, 2020, and Other Periods





### Highlight

**Outlays for military active duty and retirement, veterans benefits, Supplemental Security Income accelerated into December, because January 1, 2020, the normal payment date, fell on a non-business day.**

**Outlays for military active duty and retirement, veterans benefits, Supplemental Security Income, and Medicare payments to health maintenance organizations and prescription drug plans accelerated into January, because February 1, 2020, the normal payment date, fell on a non-business day.**

## Contents

Summary.....	Page 5
Receipts.....	Page 10
Outlays.....	Page 11
Means of Financing.....	Page 25
Receipts/Outlays by Month.....	Page 35
Federal Trust Funds/ Securities.....	Page 37
Receipts by Source/Outlays by Function.....	Page 38
Explanatory Notes.....	Page 39

## Introduction

The *Monthly Treasury Statement of Receipts and Outlays of the United States Government (MTS)* is prepared by the Bureau of the Fiscal Service, Department of the Treasury and, after approval by the Fiscal Assistant Secretary of the Treasury, is normally released on the 8th workday of the month following the reporting month. The publication is based on data provided by Federal entities, disbursing officers, and Federal Reserve banks.

### AUDIENCE

The *MTS* is published to meet the needs of those responsible for or interested in the cash position of the Treasury, those who are responsible or interested in the Government's budget results; and individuals and businesses whose operations depend upon or are related to the Government's financial operations.

### DISCLOSURE STATEMENT

This statement summarizes the financial activities of the Federal Government and off-budget Federal entities conducted in accordance with the Budget of the U.S. Government, i.e., receipts and outlays of funds, the surplus or deficit, and the means of financing the deficit or disposing of the surplus. Information is presented on a modified cash basis; receipts are accounted for on the basis of collections; refunds of receipts are treated as deductions from gross receipts; revolving and management fund receipts, reimbursements and refunds of monies previously expended are treated as deductions from gross outlays; and interest on the public debt (public issues) is recognized on the accrual basis. Major information sources include accounting data reported by Federal entities, disbursing officers, and Federal Reserve banks.

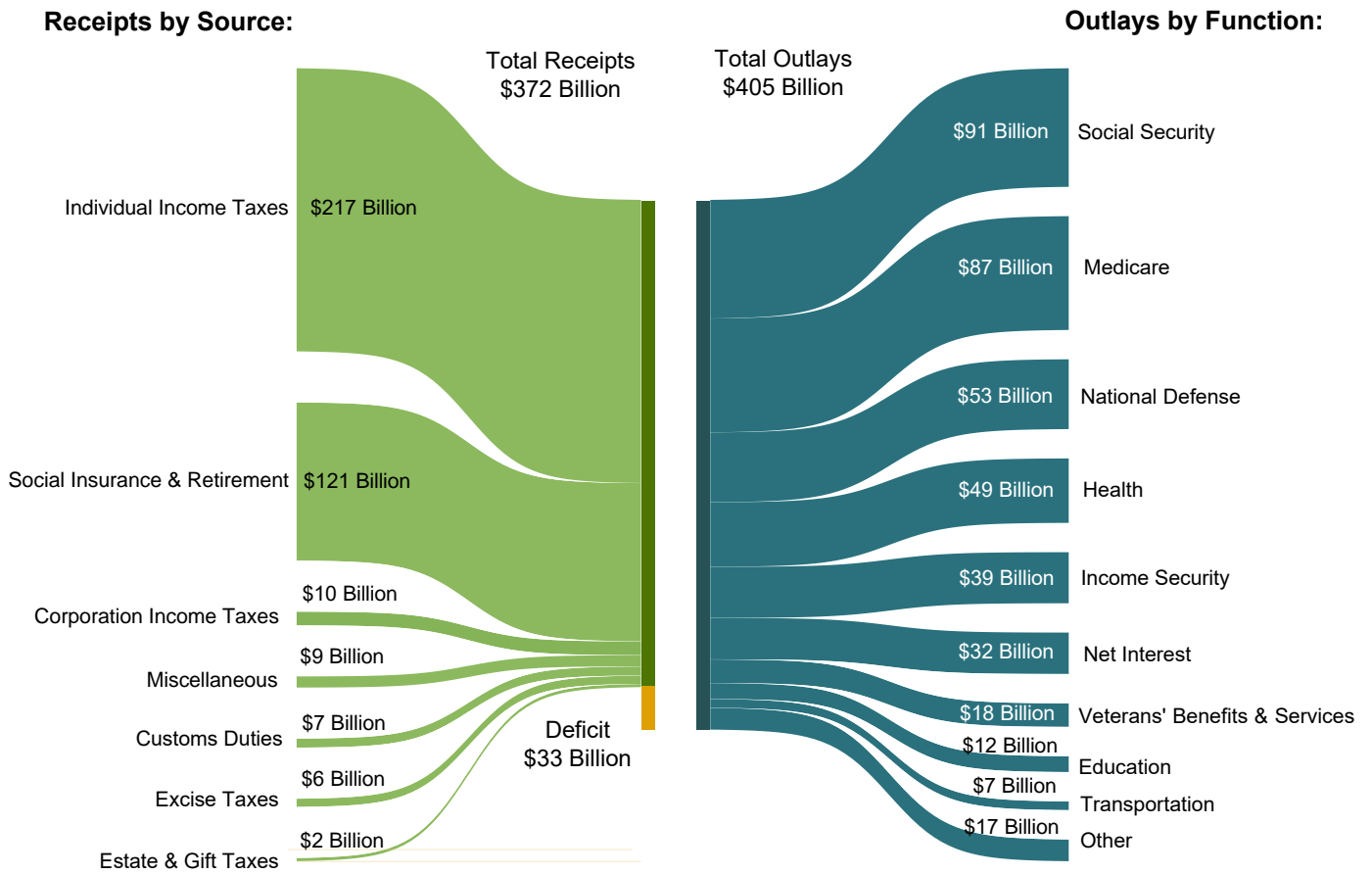
### TRIAD OF PUBLICATIONS

The *MTS* is part of a triad of Treasury financial reports. The *Daily Treasury Statement* is published each working day of the Federal Government. It provides data on the cash and debt operations of the Treasury based upon reporting of the Treasury account balances by Federal Reserve banks. The *MTS* is a report of Government receipts and outlays, based on agency reporting. The *Combined Statement of Receipts, Outlays, and Balances of the United States Government* is the official publication of the detailed receipts and outlays of the Government. It is published annually in accordance with legislative mandates given to the Secretary of the Treasury.

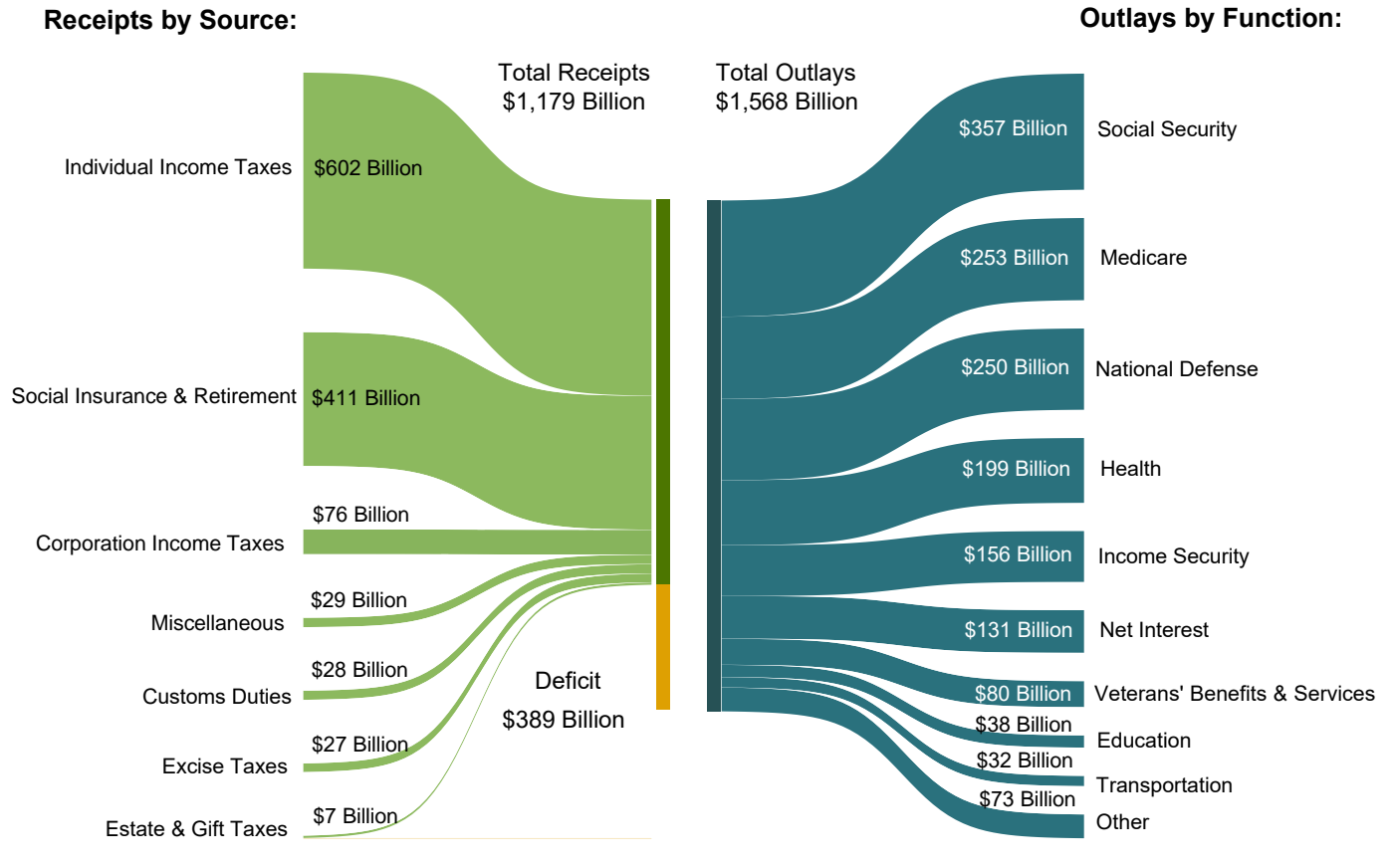
### DATA SOURCES AND INFORMATION

The Explanatory Notes section of this publication provides information concerning the flow of data into the *MTS* and sources of information relevant to the *MTS*.

**Figure 1. Receipts, Outlays, and Surplus/Deficit for January 2020**



**Figure 2. Cumulative Receipts, Outlays, and Surplus/Deficit through Fiscal Year 2020**



**Table 1. Summary of Receipts, Outlays, and the Deficit/Surplus of the U.S. Government, Fiscal Years 2019 and 2020, by Month**

[\$ millions]			
Period	Receipts	Outlays	Deficit/Surplus (-)
<b>FY 2019</b>			
October	252,692	353,183	100,491
November	205,961	410,864	204,903
December	312,584	326,123	13,539
January	339,980	331,299	-8,681
February	167,265	401,243	233,977
March	228,811	375,756	146,945
April	535,545	375,240	-160,304
May	232,064	439,833	207,768
June	333,952	342,430	8,477
July	251,348	371,043	119,695
August	227,965	428,309	200,344
September	374,056	291,288	-82,768
<b>Year-to-Date</b>	<b>3,462,223</b>	<b>4,446,611</b>	<b>984,388</b>
<b>FY 2020</b>			
October	245,521	379,988	134,467
November	225,185	434,024	208,838
December	335,805	349,091	13,286
January	372,288	404,881	32,593
<b>Year-to-Date</b>	<b>1,178,800</b>	<b>1,567,985</b>	<b>389,185</b>

1 Outlays increased by \$13 million due to additional reporting by the Department of the Interior.

Note: Details may not add to totals due to rounding.

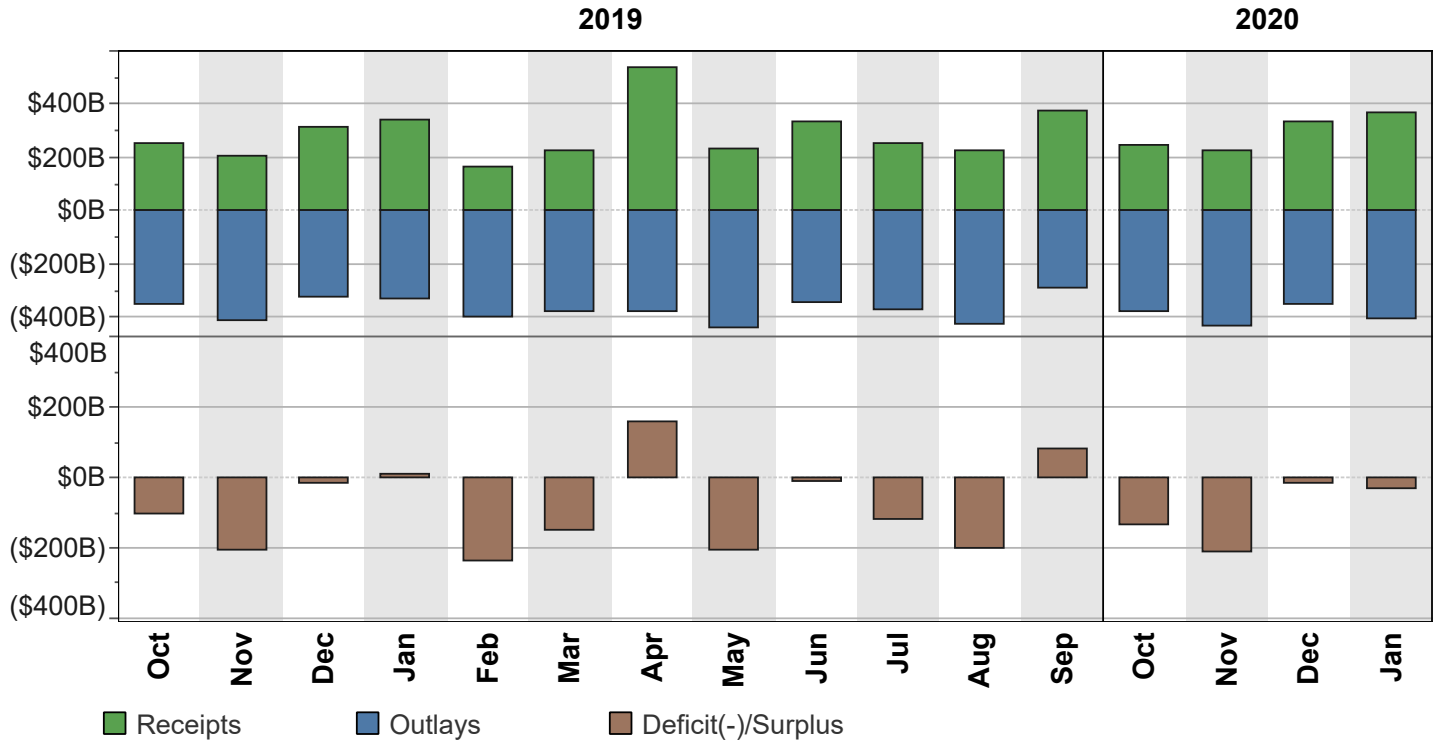
**Table 2. Summary of Budget and Off-Budget Results and Financing of the U.S. Government, January 2020 and Other Periods**

[\$ millions]					
Classification	This Month	Current Fiscal Year to Date	Budget Estimates Full Fiscal Year <sup>1</sup>	Comparable Prior Period Year to Date (2019)	Budget Estimates Next Fiscal Year (2021) <sup>1</sup>
<b>Total On-Budget and Off-Budget Results:</b>					
Total Receipts	372,288	1,178,800	3,631,874	1,111,217	3,833,374
On-Budget Receipts	281,546	877,960	2,685,416	827,087	2,831,699
Off-Budget Receipts	90,742	300,840	946,458	284,130	1,001,675
Total Outlays	404,881	1,567,985	4,676,957	1,421,469	4,849,037
On-Budget Outlays	326,438	1,275,366	3,714,389	1,148,451	3,828,794
Off-Budget Outlays	78,443	292,619	962,568	273,018	1,020,243
Total Surplus (+) or Deficit (-)	-32,593	-389,185	-1,045,083	-310,252	-1,015,663
On-Budget Surplus (+) or Deficit (-)	-44,892	-397,406	-1,028,973	-321,364	-997,095
Off-Budget Surplus (+) or Deficit (-)	+12,299	+8,221	-16,110	+11,112	-18,568
Total On-Budget and Off-Budget Financing	32,593	389,185	1,045,083	310,252	1,015,663
<b>Means of Financing:</b>					
Borrowing from the Public	41,898	392,964	1,112,332	339,732	1,082,292
Reduction of Operating Cash, Increase (-)	-131	-21,500	.....	-18,885	.....
By Other Means	-9,174	17,721	-67,249	-10,595	-66,629

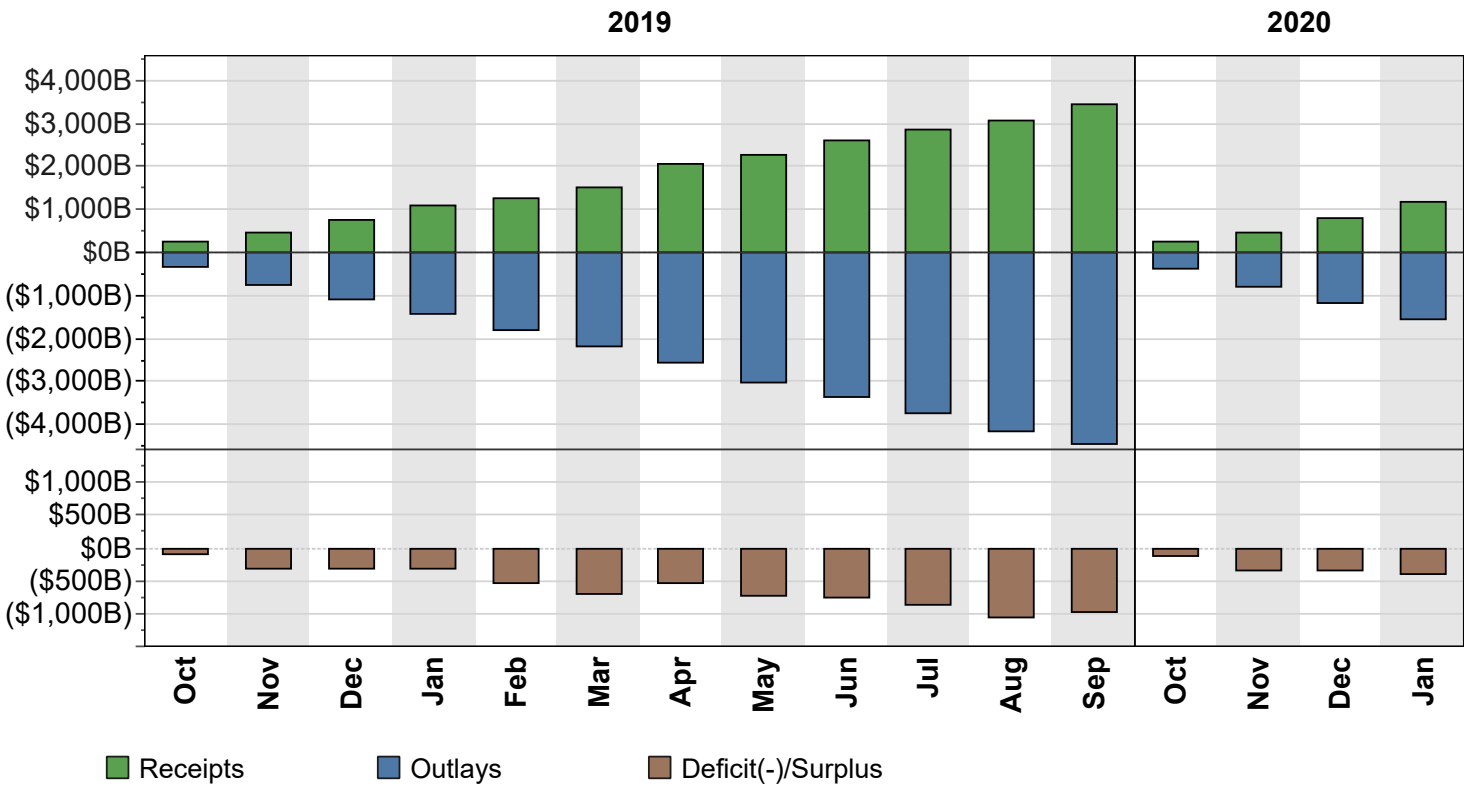
1 These estimates are based on the FY 2020 Mid-Session Review, released by the Office of Management and Budget on July 12, 2019.

Note: Details may not add to totals due to rounding.  
... No Transactions

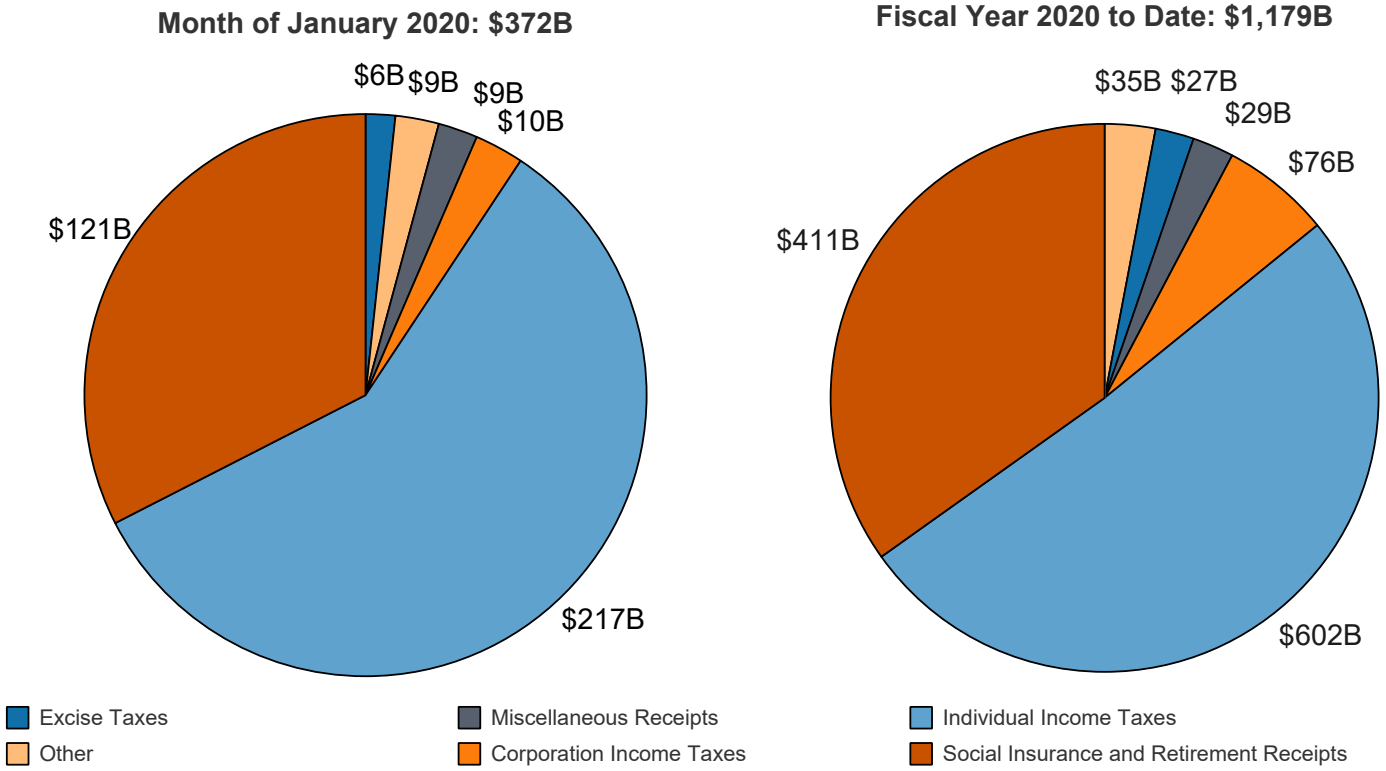
**Figure 3. Monthly Receipts, Outlays, and Budget Deficit/Surplus of the U.S. Government, Fiscal Years 2019 and 2020**



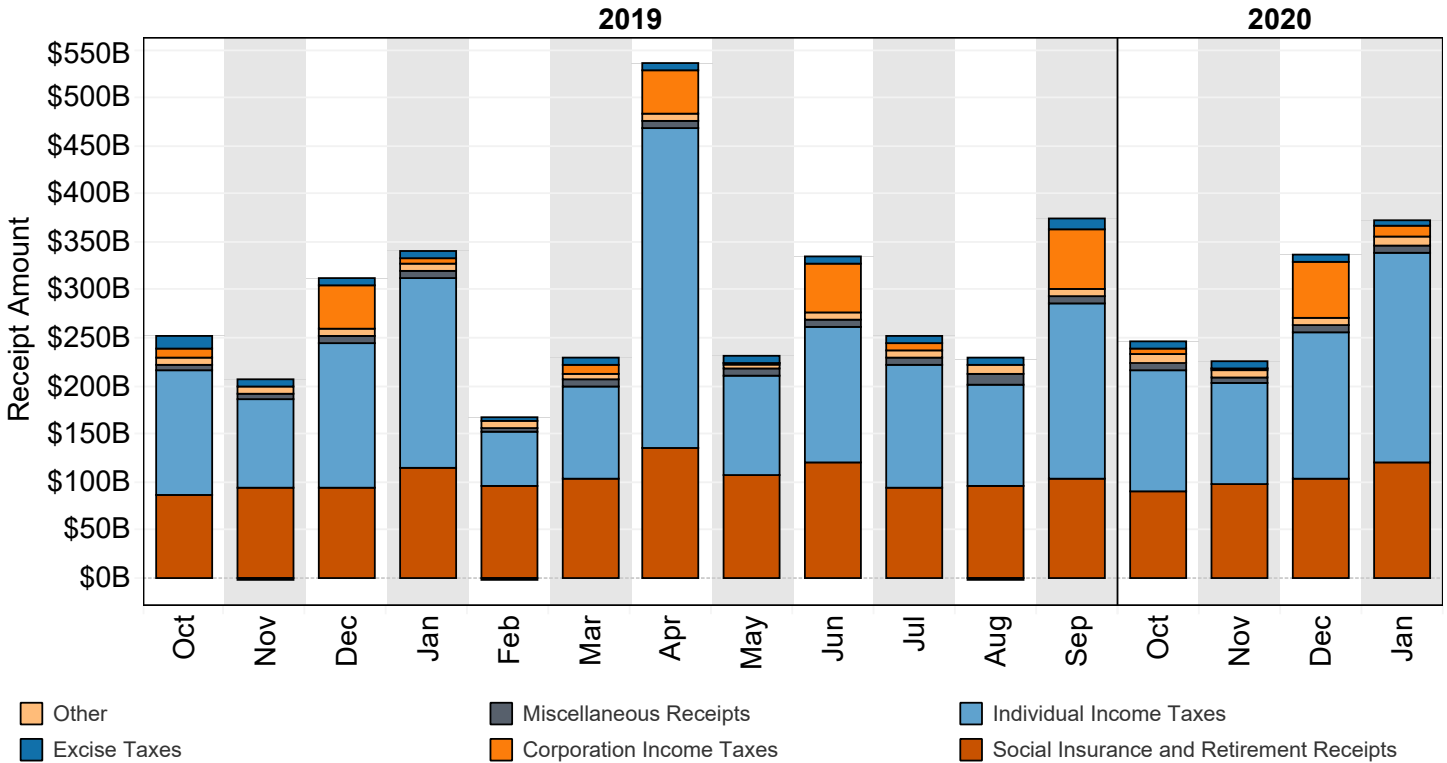
**Figure 4. Monthly Receipts, Outlays, and Budget Deficit/Surplus of the U.S. Government, Cumulative, Fiscal Years 2019 and 2020**



**Figure 5. Receipts of the U.S. Government, by Source, Fiscal Year 2020**

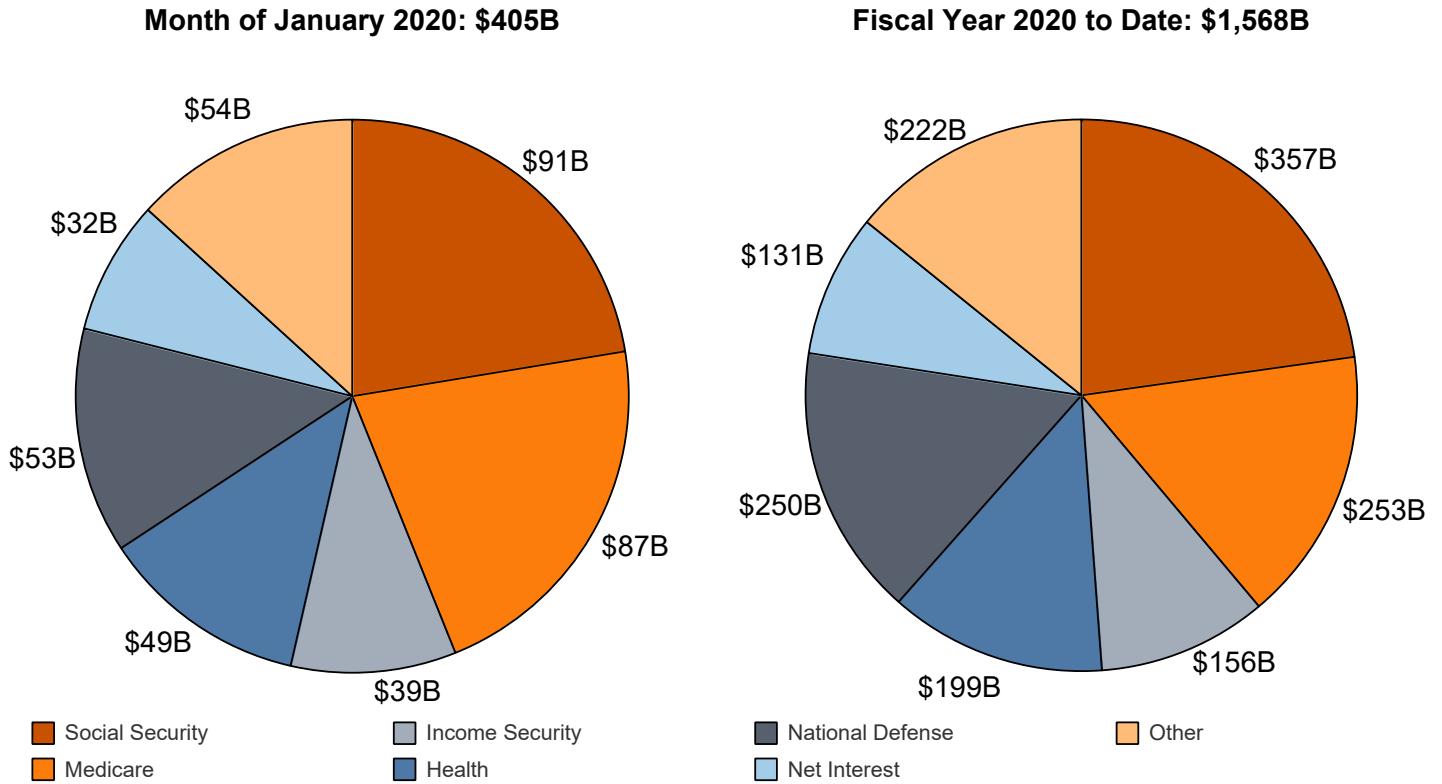


**Figure 6. Monthly Receipts of the U.S. Government, by Source, Fiscal Years 2019 and 2020**



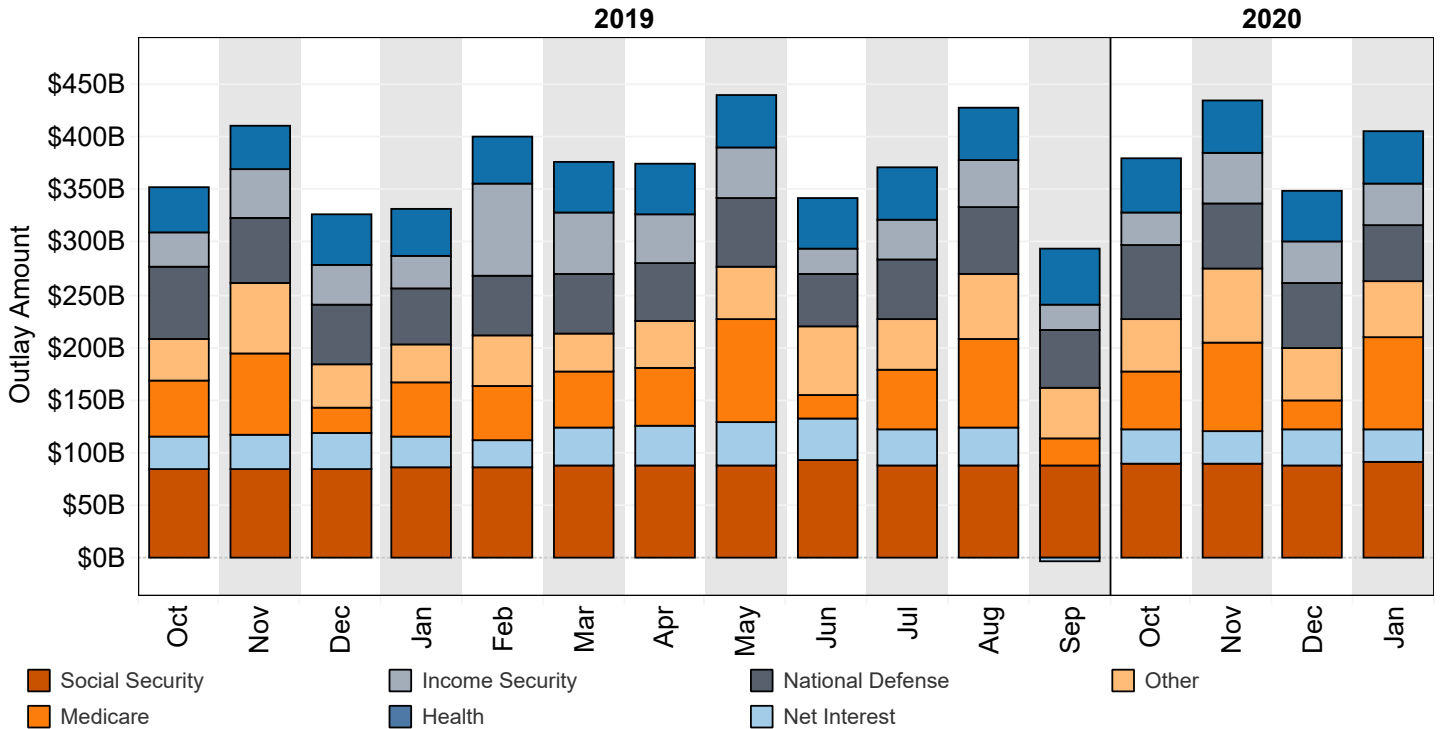
"Other" Includes: Customs Duties and Estate and Gift Taxes  
 \*Disclaimer: Other category is subject to change due to negative balances held.  
 Note: Details may not add to totals due to rounding

**Figure 7. Outlays of the U.S. Government, by Source, Fiscal Year 2020**



\*Disclaimer: Other category is subject to change due to negative balances held.

**Figure 8. Monthly Outlays of the U.S. Government, by Source, Fiscal Years 2019 and 2020**



"Other" Includes: Administration of Justice, Agriculture, Commerce and Housing Credit, Community and Regional Development, Education, Training, Employment, and Social Services, Energy, General Government, General Science, Space, and Technology, International Affairs, Natural Resources and Environment, Transportation, Undistributed Offsetting Receipts, Veterans' Benefits and Services.

Note: Details may not add to totals due to rounding



**Table 3. Summary of Receipts and Outlays of the U.S. Government, January 2020 and Other Periods**

[\$ millions]				
Classification	This Month	Current Fiscal Year to Date	Comparable Prior Period Year to Date	Budget Estimates Full Fiscal Year <sup>1</sup>
<b>Budget Receipts</b>				
Individual Income Taxes	216,660	601,518	569,931	1,805,420
Corporation Income Taxes	10,492	75,905	59,863	253,076
Social Insurance and Retirement Receipts:				
Employment and General Retirement (Off-Budget)	90,742	300,840	284,130	946,458
Employment and General Retirement (On-Budget)	26,862	99,488	94,646	292,775
Unemployment Insurance	3,019	8,620	8,922	45,772
Other Retirement	422	1,746	1,483	5,234
Excise Taxes	6,308	26,875	36,204	108,650
Estate and Gift Taxes	2,361	6,988	6,126	19,284
Customs Duties	6,918	28,064	24,455	64,336
Miscellaneous Receipts	8,506	28,756	25,457	90,869
<b>Total Receipts</b>	<b>372,288</b>	<b>1,178,800</b>	<b>1,111,217</b>	<b>3,631,874</b>
<b>(On-Budget)</b>	<b>281,546</b>	<b>877,960</b>	<b>827,087</b>	<b>2,685,416</b>
<b>(Off-Budget)</b>	<b>90,742</b>	<b>300,840</b>	<b>284,130</b>	<b>946,458</b>
<b>Budget Outlays</b>				
Legislative Branch	460	1,854	1,697	5,545
Judicial Branch	689	2,856	2,590	8,668
Department of Agriculture	11,225	63,950	63,782	132,362
Department of Commerce	1,012	5,625	4,212	15,523
Department of Defense--Military Programs	50,354	237,702	218,762	696,928
Department of Education	9,839	27,490	26,691	82,878
Department of Energy	2,830	10,804	9,188	30,810
Department of Health and Human Services	134,418	443,759	385,112	1,287,078
Department of Homeland Security	4,563	19,950	19,770	62,006
Department of Housing and Urban Development	3,667	15,357	15,197	48,830
Department of the Interior	1,254	<sup>2</sup> 4,872	4,396	14,894
Department of Justice	3,671	12,608	11,299	38,288
Department of Labor	4,882	10,018	10,147	38,454
Department of State	2,411	10,773	9,973	25,295
Department of Transportation	5,443	25,939	23,597	86,561
Department of the Treasury:				
Interest on Treasury Debt Securities (Gross)	33,903	194,091	192,032	618,226
Other	6,375	31,486	18,375	108,678
Department of Veterans Affairs	17,983	79,744	67,095	217,506
Corps of Engineers	731	2,910	2,269	5,785
Other Defense Civil Programs	6,191	27,026	21,615	62,851
Environmental Protection Agency	826	3,263	2,922	7,028
Executive Office of the President	32	131	119	409
General Services Administration	-27	-52	528	107,034
International Assistance Programs	2,489	5,560	4,330	26,135
National Aeronautics and Space Administration	1,318	7,171	6,364	23,289
National Science Foundation	578	2,401	2,196	7,394
Office of Personnel Management	9,445	35,604	34,393	0
Small Business Administration	85	352	431	796
Social Security Administration	95,567	380,623	356,811	1,156,311
Independent Agencies	1,758	9,297	10,857	20,057
National Security Commission on Artificial Intelligence	1	1	.....	.....
Federal Permitting Improvement Steering Council	(**)	(**)	.....	.....
Allowances	.....	.....	.....	-1,050
Undistributed Offsetting Receipts:				
Interest	-1,716	-59,779	-63,042	-143,956
Other	-7,375	-45,400	-42,239	-113,656
<b>Total Outlays</b>	<b>404,881</b>	<b>1,567,985</b>	<b>1,421,469</b>	<b>4,676,957</b>
<b>(On-Budget)</b>	<b>326,438</b>	<b>1,275,366</b>	<b>1,148,451</b>	<b>3,714,389</b>
<b>(Off-Budget)</b>	<b>78,443</b>	<b>292,619</b>	<b>273,018</b>	<b>962,568</b>
<b>Surplus (+) or Deficit (-)</b>	<b>-32,593</b>	<b>-389,185</b>	<b>-310,252</b>	<b>-1,045,083</b>
<b>(On-Budget)</b>	<b>-44,892</b>	<b>-397,406</b>	<b>-321,364</b>	<b>-1,028,973</b>
<b>(Off-Budget)</b>	<b>+12,299</b>	<b>+8,221</b>	<b>+11,112</b>	<b>-16,110</b>

1 These estimates are based on the FY 2020 Mid-Session Review, released by the Office of Management and Budget on July 12, 2019.

2 Outlays increased by \$13 million due to additional reporting for the month of December 2019.

Note: Details may not add to totals due to rounding.

... No Transactions

(\*\*) Less than absolute value of \$500,000

**Table 4. Receipts of the U.S. Government, January 2020 and Other Periods**

Classification	This Month			Current Fiscal Year to Date			Prior Fiscal Year to Date		
	Gross Receipts	Refunds (Deduct)	Receipts	Gross Receipts	Refunds (Deduct)	Receipts	Gross Receipts	Refunds (Deduct)	Receipts
<b>Individual Income Taxes</b>									
Withheld	123,436			477,164			452,062		
Presidential Election Campaign Fund	1			2			2		
Other	95,207			147,999			142,961		
<b>Total -- Individual Income Taxes</b>	<b>218,643</b>	<b>1,984</b>	<b>216,660</b>	<b>625,166</b>	<b>23,648</b>	<b>601,518</b>	<b>595,025</b>	<b>25,095</b>	<b>569,931</b>
<b>Corporation Income Taxes</b>									
	<b>11,619</b>	<b>1,127</b>	<b>10,492</b>	<b>89,393</b>	<b>13,488</b>	<b>75,905</b>	<b>73,209</b>	<b>13,346</b>	<b>59,863</b>
<b>Social Insurance and Retirement Receipts:</b>									
Employment and General Retirement:									
Federal Old-Age and Survivors Insurance Trust Fund:									
Federal Insurance Contributions Act Taxes	70,495	.....	70,495	247,695	.....	247,695	226,744	.....	226,744
Self-Employment Contributions Act Taxes	7,075	.....	7,075	8,011	.....	8,011	7,363	.....	7,363
Adjustments Attributable to Prior Years-FICA	.....	.....	.....	1,507	.....	1,507	-250	.....	-250
Adjustments Attributable to Prior Years-SECA	.....	.....	.....	-121	.....	-121	-1,114	.....	-1,114
<b>Total -- Federal Old-Age and Survivors Insurance Trust Fund</b>	<b>77,570</b>	<b>.....</b>	<b>77,570</b>	<b>257,092</b>	<b>.....</b>	<b>257,092</b>	<b>232,743</b>	<b>.....</b>	<b>232,743</b>
Federal Disability Insurance Trust Fund:									
Federal Insurance Contributions Act Taxes	11,971	.....	11,971	42,061	.....	42,061	49,968	.....	49,968
Self-Employment Contributions Act Taxes	1,201	.....	1,201	1,359	.....	1,359	1,740	.....	1,740
Adjustments Attributable to Prior Years-FICA	.....	.....	.....	371	.....	371	-54	.....	-54
Adjustments Attributable to Prior Years-SECA	.....	.....	.....	-42	.....	-42	-267	.....	-267
<b>Total -- Federal Disability Insurance Trust Fund</b>	<b>13,172</b>	<b>.....</b>	<b>13,172</b>	<b>43,748</b>	<b>.....</b>	<b>43,748</b>	<b>51,387</b>	<b>.....</b>	<b>51,387</b>
Federal Hospital Insurance Trust Fund:									
Federal Insurance Contributions Act Taxes	23,256	.....	23,256	93,982	.....	93,982	90,037	.....	90,037
Self-Employment Contributions Act Taxes	3,114	.....	3,114	3,556	.....	3,556	3,453	.....	3,453
Adjustments Attributable to Prior Years-FICA	.....	.....	.....	266	.....	266	-190	.....	-190
Adjustments Attributable to Prior Years-SECA	.....	.....	.....	-18	.....	-18	-481	.....	-481
<b>Total -- Federal Hospital Insurance Trust Fund</b>	<b>26,370</b>	<b>.....</b>	<b>26,370</b>	<b>97,786</b>	<b>.....</b>	<b>97,786</b>	<b>92,820</b>	<b>.....</b>	<b>92,820</b>
Railroad Retirement:									
Rail Pension and Supplemental Annuity	266	8	258	932	53	879	926	(**)	926
Social Security Equivalent Account	241	7	234	879	56	824	900	(**)	900
<b>Total -- Employment and General Retirement</b>	<b>117,619</b>	<b>14</b>	<b>117,604</b>	<b>400,437</b>	<b>109</b>	<b>400,328</b>	<b>378,775</b>	<b>(**)</b>	<b>378,776</b>
Unemployment Insurance:									
Deposits by States	1,859	.....	1,859	6,751	.....	6,751	7,031	.....	7,031
Federal Unemployment Taxes	1,135	5	1,130	1,838	29	1,809	1,831	8	1,824
Railroad Unemployment Taxes	29	.....	29	60	.....	60	67	.....	67
<b>Total -- Unemployment Insurance</b>	<b>3,024</b>	<b>5</b>	<b>3,019</b>	<b>8,649</b>	<b>29</b>	<b>8,620</b>	<b>8,929</b>	<b>8</b>	<b>8,922</b>
Other Retirement:									
Federal Employees' Retirement--Employee Share	420	.....	420	1,735	.....	1,735	1,474	.....	1,474
Non-Federal Employees Retirement	2	.....	2	10	.....	10	9	.....	9
<b>Total -- Other Retirement</b>	<b>422</b>	<b>.....</b>	<b>422</b>	<b>1,746</b>	<b>.....</b>	<b>1,746</b>	<b>1,483</b>	<b>.....</b>	<b>1,483</b>
<b>Total -- Social Insurance and Retirement Receipts</b>	<b>121,065</b>	<b>19</b>	<b>121,045</b>	<b>410,831</b>	<b>138</b>	<b>410,694</b>	<b>389,188</b>	<b>7</b>	<b>389,181</b>
<b>Excise Taxes:</b>									
Miscellaneous Excise Taxes	1,421	465	955	9,899	999	8,900	22,599	2,976	19,622
Airport and Airway Trust Fund	1,473	.....	1,473	4,864	.....	4,864	4,349	.....	4,349
Highway Trust Fund	3,893	30	3,863	13,160	103	13,058	12,226	103	12,123
Black Lung Disability Trust Fund	16	.....	16	53	.....	53	109	.....	109
<b>Total -- Excise Taxes</b>	<b>6,803</b>	<b>495</b>	<b>6,308</b>	<b>27,977</b>	<b>1,102</b>	<b>26,875</b>	<b>39,284</b>	<b>3,079</b>	<b>36,204</b>
<b>Estate and Gift Taxes</b>									
	<b>2,380</b>	<b>19</b>	<b>2,361</b>	<b>7,187</b>	<b>199</b>	<b>6,988</b>	<b>6,414</b>	<b>288</b>	<b>6,126</b>
<b>Customs Duties</b>									
	<b>7,270</b>	<b>352</b>	<b>6,918</b>	<b>29,703</b>	<b>1,639</b>	<b>28,064</b>	<b>25,077</b>	<b>622</b>	<b>24,455</b>
<b>Miscellaneous Receipts:</b>									
Deposit of Earnings, Federal Reserve System	5,803	.....	5,803	20,807	.....	20,807	18,274	.....	18,274
Universal Service Fund	729	.....	729	3,214	.....	3,214	3,288	.....	3,288
All Other	1,973	(**)	1,973	4,738	3	4,735	3,903	8	3,895
<b>Total -- Miscellaneous Receipts</b>	<b>8,506</b>	<b>(**)</b>	<b>8,506</b>	<b>28,758</b>	<b>3</b>	<b>28,756</b>	<b>25,465</b>	<b>8</b>	<b>25,457</b>
<b>Total -- Receipts</b>	<b>376,285</b>	<b>3,997</b>	<b>372,288</b>	<b>1,219,015</b>	<b>40,215</b>	<b>1,178,800</b>	<b>1,153,662</b>	<b>42,445</b>	<b>1,111,217</b>
<b>Total -- On-Budget</b>	<b>285,543</b>	<b>3,997</b>	<b>281,546</b>	<b>918,175</b>	<b>40,215</b>	<b>877,960</b>	<b>869,532</b>	<b>42,445</b>	<b>827,087</b>
<b>Total -- Off-Budget</b>	<b>90,742</b>	<b>.....</b>	<b>90,742</b>	<b>300,840</b>	<b>.....</b>	<b>300,840</b>	<b>284,130</b>	<b>.....</b>	<b>284,130</b>

Note: Details may not add to totals due to rounding.

(\*\*) Less than absolute value of \$500,000

... No Transactions

**Table 5. Outlays of the U.S. Government, January 2020 and Other Periods**

[\$ millions]

Classification	This Month			Current Fiscal Year to Date			Prior Fiscal Year to Date		
	Gross Outlays	Applicable Receipts	Outlays	Gross Outlays	Applicable Receipts	Outlays	Gross Outlays	Applicable Receipts	Outlays
<b>Legislative Branch:</b>									
Senate	74	(**)	74	322	1	321	321	1	320
House of Representatives	134	(**)	134	514	1	513	478	1	477
Joint Items	1	.....	1	6	.....	6	6	.....	6
Capitol Police	37	.....	37	158	.....	158	141	.....	141
Congressional Budget Office	4	.....	4	19	.....	19	17	.....	17
Architect of the Capitol	62	(**)	61	272	2	270	222	2	220
Library of Congress	48	1	47	234	3	231	235	4	231
Government Printing Office	30	.....	30	78	.....	78	47	.....	47
Government Accountability Office	48	.....	48	209	.....	209	200	.....	200
United States Tax Court	4	.....	4	18	.....	18	15	.....	15
Other Legislative Branch Agencies	23	.....	23	62	.....	62	35	.....	35
Proprietary Receipts from the Public	.....	4	-4	.....	25	-25	.....	7	-7
Intrabudgetary Transactions	(**)	.....	(**)	-6	.....	-6	-6	.....	-6
<b>Total--Legislative Branch</b>	<b>465</b>	<b>5</b>	<b>460</b>	<b>1,886</b>	<b>33</b>	<b>1,854</b>	<b>1,711</b>	<b>14</b>	<b>1,697</b>
<b>Judicial Branch:</b>									
Supreme Court of the United States	8	.....	8	35	.....	35	25	.....	25
Courts of Appeals, District Courts, and Other Judicial Services	1,127	.....	1,127	3,216	.....	3,216	2,520	.....	2,520
Other	51	.....	51	389	.....	389	167	.....	167
Proprietary Receipts from the Public	.....	12	-12	.....	55	-55	.....	50	-50
Intrabudgetary Transactions	-485	.....	-485	-730	.....	-730	-73	.....	-73
<b>Total--Judicial Branch</b>	<b>701</b>	<b>12</b>	<b>689</b>	<b>2,910</b>	<b>55</b>	<b>2,856</b>	<b>2,640</b>	<b>50</b>	<b>2,590</b>
<b>Department of Agriculture:</b>									
Agricultural Research Service	113	.....	113	473	.....	473	417	.....	417
National Institute of Food and Agriculture:									
Research and Education Activities	44	.....	44	233	.....	233	232	.....	232
Extension Activities	29	.....	29	161	.....	161	178	.....	178
Other	8	.....	8	34	.....	34	33	.....	33
Animal and Plant Health Inspection Service	121	.....	121	438	.....	438	375	.....	375
Food Safety and Inspection Service	76	.....	76	352	.....	352	292	.....	292
Agricultural Marketing Service	94	.....	94	506	.....	506	504	.....	504
Risk Management Agency:									
Administrative and Operating Expenses	5	.....	5	23	.....	23	25	.....	25
Federal Crop Insurance Corporation Fund	1,468	763	704	8,474	2,838	5,635	7,134	24	7,110
Farm Service Agency:									
Salaries and Expenses	121	.....	121	396	.....	396	375	.....	375
USDA Supplemental Assistance	(**)	.....	(**)	(**)	.....	(**)	(**)	.....	(**)
Agricultural Disaster Relief Fund	(**)	.....	(**)	(**)	.....	(**)	(**)	.....	(**)
Commodity Credit Corporation	1,568	724	845	18,310	1,884	16,426	17,581	1,528	16,053
Tobacco Trust Fund	.....	.....	.....	.....	.....	.....	(**)	.....	(**)
Agricultural Credit Insurance Fund	6	7	-1	86	20	67	81	17	64
Other	13	.....	13	49	.....	49	24	.....	24
<b>Total--Farm Service Agency</b>	<b>1,709</b>	<b>731</b>	<b>978</b>	<b>18,842</b>	<b>1,903</b>	<b>16,938</b>	<b>18,061</b>	<b>1,545</b>	<b>16,516</b>
Natural Resources Conservation Service:									
Conservation Operations	75	.....	75	294	.....	294	236	.....	236
Farm Security and Rural Investment Programs	445	.....	445	1,615	.....	1,615	1,572	.....	1,572
Other	26	.....	26	82	.....	82	78	.....	78
Rural Development	19	.....	19	58	.....	58	26	.....	26
Rural Housing Service:									
Rural Housing Insurance Fund	45	46	-1	199	162	38	187	151	36
Rental Assistance Program	103	.....	103	402	.....	402	394	.....	394
Other	14	.....	14	57	.....	57	44	.....	44
Rural Utilities Service:									
Rural Electrification and Telecommunications Fund	27	8	19	647	52	595	533	1,502	-968
Other	38	7	31	217	23	195	183	21	162
Foreign Agricultural Service	170	.....	170	770	.....	770	555	.....	555
Food and Nutrition Service:									
Supplemental Nutrition Assistance Program	5,191	.....	5,191	21,002	.....	21,002	24,134	.....	24,134
Child Nutrition Programs	2,067	.....	2,067	9,333	.....	9,333	8,762	.....	8,762
Special Supplemental Nutrition Program for Women, Infants, and Children (WIC)	470	.....	470	1,780	.....	1,780	1,795	.....	1,795
Other	55	.....	55	217	.....	217	150	.....	150
<b>Total--Food and Nutrition Service</b>	<b>7,783</b>	<b>.....</b>	<b>7,783</b>	<b>32,332</b>	<b>.....</b>	<b>32,332</b>	<b>34,842</b>	<b>.....</b>	<b>34,842</b>

**Table 5. Outlays of the U.S. Government, January 2020 and Other Periods - Continued**

[\$ millions]

Classification	This Month			Current Fiscal Year to Date			Prior Fiscal Year to Date		
	Gross Outlays	Applicable Receipts	Outlays	Gross Outlays	Applicable Receipts	Outlays	Gross Outlays	Applicable Receipts	Outlays
<b>Department of Agriculture: - Continued</b>									
Forest Service:									
National Forest System	133	.....	133	632	.....	632	578	.....	578
Capital Improvement and Maintenance	34	.....	34	170	.....	170	142	.....	142
Wildland Fire Management	125	.....	125	686	.....	686	906	.....	906
Forest Service Permanent Appropriations	11	.....	11	58	.....	58	67	.....	67
Other	40	.....	40	256	.....	256	232	.....	232
<b>Total--Forest Service</b>	<b>343</b>	<b>.....</b>	<b>343</b>	<b>1,802</b>	<b>.....</b>	<b>1,802</b>	<b>1,925</b>	<b>.....</b>	<b>1,925</b>
Other	175	5	170	1,289	15	1,274	474	13	461
Proprietary Receipts from the Public	(**)	124	-124	(**)	427	-427	.....	402	-402
Intrabudgetary Transactions	-21	.....	-21	68	.....	68	-858	.....	-858
<b>Total--Department of Agriculture</b>	<b>12,909</b>	<b>1,684</b>	<b>11,225</b>	<b>69,370</b>	<b>5,420</b>	<b>63,950</b>	<b>67,440</b>	<b>3,658</b>	<b>63,782</b>
<b>Department of Commerce:</b>									
Economic Development Administration	22	.....	22	109	.....	109	75	.....	75
Bureau of the Census	353	.....	353	1,575	.....	1,575	645	.....	645
International Trade Administration	34	.....	34	149	.....	149	118	.....	118
National Oceanic and Atmospheric Administration	455	(**)	455	1,920	1	1,920	1,470	2	1,468
National Institute of Standards and Technology	86	.....	86	384	.....	384	320	.....	320
National Telecommunications and Information Administration	26	.....	26	1,309	.....	1,309	1,381	(**)	1,381
Other	37	5	32	187	24	163	209	28	181
Proprietary Receipts from the Public	.....	-3	3	.....	-15	15	.....	-22	22
Intrabudgetary Transactions	(**)	.....	(**)	2	.....	2	1	.....	1
Offsetting Governmental Receipts	.....	(**)	(**)	.....	1	-1	.....	(**)	(**)
<b>Total--Department of Commerce</b>	<b>1,015</b>	<b>2</b>	<b>1,012</b>	<b>5,636</b>	<b>11</b>	<b>5,625</b>	<b>4,221</b>	<b>8</b>	<b>4,212</b>
<b>Department of Defense--Military Programs:</b>									
Military Personnel:									
Department of the Army	4,748	.....	4,748	23,310	.....	23,310	21,020	.....	21,020
Department of the Navy	4,005	.....	4,005	19,925	.....	19,925	17,792	.....	17,792
Department of the Air Force	3,084	.....	3,084	15,314	.....	15,314	13,349	.....	13,349
Defense Agencies	.....	.....	.....	8,505	.....	8,505	7,909	.....	7,909
<b>Total--Military Personnel</b>	<b>11,838</b>	<b>.....</b>	<b>11,838</b>	<b>67,054</b>	<b>.....</b>	<b>67,054</b>	<b>60,071</b>	<b>.....</b>	<b>60,071</b>
Operation and Maintenance:									
Department of the Army	6,969	.....	6,969	24,614	.....	24,614	22,451	.....	22,451
Department of the Navy	5,429	.....	5,429	21,001	.....	21,001	20,213	.....	20,213
Department of the Air Force	5,083	.....	5,083	19,678	.....	19,678	19,041	.....	19,041
Defense Agencies	5,962	.....	5,962	24,563	.....	24,563	23,454	.....	23,454
<b>Total--Operation and Maintenance</b>	<b>23,443</b>	<b>.....</b>	<b>23,443</b>	<b>89,857</b>	<b>.....</b>	<b>89,857</b>	<b>85,159</b>	<b>.....</b>	<b>85,159</b>
International Reconstruction and Other Assistance:									
Department of the Army	.....	.....	.....	.....	.....	.....	6	.....	6
Procurement:									
Department of the Army	1,511	.....	1,511	8,011	.....	8,011	6,241	.....	6,241
Department of the Navy	3,359	.....	3,359	17,460	.....	17,460	14,904	.....	14,904
Department of the Air Force	3,333	.....	3,333	16,577	.....	16,577	14,889	.....	14,889
Defense Agencies	635	.....	635	3,082	.....	3,082	2,468	.....	2,468
<b>Total--Procurement</b>	<b>8,838</b>	<b>.....</b>	<b>8,838</b>	<b>45,129</b>	<b>.....</b>	<b>45,129</b>	<b>38,501</b>	<b>.....</b>	<b>38,501</b>
Research, Development, Test, and Evaluation:									
Department of the Army	1,007	.....	1,007	4,258	.....	4,258	2,832	.....	2,832
Department of the Navy	1,178	.....	1,178	5,580	.....	5,580	6,252	.....	6,252
Department of the Air Force	1,893	.....	1,893	13,544	.....	13,544	12,112	.....	12,112
Defense Agencies	1,874	.....	1,874	7,392	.....	7,392	7,058	.....	7,058
<b>Total--Research, Development, Test, and Evaluation</b>	<b>5,952</b>	<b>.....</b>	<b>5,952</b>	<b>30,774</b>	<b>.....</b>	<b>30,774</b>	<b>28,253</b>	<b>.....</b>	<b>28,253</b>
Military Construction:									
Department of the Army	77	.....	77	778	.....	778	694	.....	694
Department of the Navy	130	.....	130	505	.....	505	468	.....	468
Department of the Air Force	118	.....	118	467	.....	467	433	.....	433
Defense Agencies	196	.....	196	884	.....	884	870	.....	870
<b>Total--Military Construction</b>	<b>521</b>	<b>.....</b>	<b>521</b>	<b>2,634</b>	<b>.....</b>	<b>2,634</b>	<b>2,466</b>	<b>.....</b>	<b>2,466</b>
Family Housing:									
Department of the Army	31	.....	31	127	.....	127	136	.....	136
Department of the Navy	22	.....	22	83	.....	83	80	.....	80
Department of the Air Force	23	.....	23	101	.....	101	102	.....	102
Defense Agencies	4	(**)	3	15	(**)	15	32	.....	32
Revolving and Management Funds:									

**Table 5. Outlays of the U.S. Government, January 2020 and Other Periods - Continued**

[\$ millions]

Classification	This Month			Current Fiscal Year to Date			Prior Fiscal Year to Date		
	Gross Outlays	Applicable Receipts	Outlays	Gross Outlays	Applicable Receipts	Outlays	Gross Outlays	Applicable Receipts	Outlays
<b>Department of Defense--Military Programs: - Continued</b>									
Department of the Navy	1	.....	1	16	.....	16	40	.....	40
Defense Agencies:									
Working Capital Fund	-38	.....	-38	2,338	.....	2,338	4,087	.....	4,087
Other	-56	.....	-56	33	.....	33	136	.....	136
Allowances	-18	.....	-18	-12	.....	-12	23	.....	23
Trust Funds:									
Department of the Army	1	.....	1	5	.....	5	5	.....	5
Department of the Navy	2	.....	2	9	.....	9	11	.....	11
Department of the Air Force	(**)	.....	(**)	1	.....	1	1	.....	1
Defense Agencies	33	.....	33	91	.....	91	90	.....	90
Proprietary Receipts from the Public:									
Department of the Army	.....	-7	7	.....	-185	185	.....	36	-36
Department of the Navy	.....	-16	16	.....	17	-17	.....	19	-19
Department of the Air Force	.....	8	-8	.....	18	-18	.....	17	-17
Defense Agencies	.....	40	-40	.....	128	-128	.....	308	-308
Intrabudgetary Transactions:									
Department of the Army	-6	.....	-6	-10	.....	-10	-18	.....	-18
Department of the Navy	-5	.....	-5	-11	.....	-11	-18	.....	-18
Department of the Air Force	-166	.....	-166	-7	.....	-7	103	.....	103
Defense Agencies	-39	.....	-39	-47	.....	-47	-124	.....	-124
Offsetting Governmental Receipts:									
Department of the Army	.....	(**)	(**)	.....	1	-1	.....	.....	.....
Defense Agencies	.....	.....	.....	.....	500	-500	.....	.....	.....
<b>Total--Department of Defense--Military Programs</b>	<b>50,381</b>	<b>27</b>	<b>50,354</b>	<b>238,181</b>	<b>479</b>	<b>237,702</b>	<b>219,142</b>	<b>380</b>	<b>218,762</b>
<b>Department of Education:</b>									
Office of Elementary and Secondary Education:									
Accelerating Achievement and Ensuring Equity	1,793	.....	1,793	5,596	.....	5,596	5,453	.....	5,453
Impact Aid	513	.....	513	680	.....	680	1,060	.....	1,060
Education Improvement Programs	454	.....	454	1,769	.....	1,769	1,575	.....	1,575
Other	30	.....	30	110	.....	110	96	.....	96
Total--Office of Elementary and Secondary Education	2,790	.....	2,790	8,156	.....	8,156	8,184	.....	8,184
Office of Innovation and Improvement	103	.....	103	303	.....	303	379	.....	379
Office of English Language Acquisition	103	.....	103	290	.....	290	291	.....	291
Office of Special Education and Rehabilitative Services:									
Special Education	1,072	.....	1,072	4,433	.....	4,433	4,192	.....	4,192
Rehabilitation Services and Disability Research	231	.....	231	1,188	.....	1,188	1,143	.....	1,143
Special Institutions for Persons with Disabilities	22	.....	22	76	.....	76	77	.....	77
Office of Vocational and Adult Education	116	.....	116	564	.....	564	545	.....	545
Office of Postsecondary Education:									
Higher Education	180	.....	180	805	.....	805	784	.....	784
Other	66	(**)	66	120	1	119	118	2	116
Total--Office of Postsecondary Education	246	(**)	246	926	1	925	902	2	900
Office of Federal Student Aid:									
Student Financial Assistance	5,355	.....	5,355	10,398	.....	10,398	10,833	.....	10,833
Student Aid Administration	120	.....	120	446	.....	446	541	.....	541
Federal Direct Student Loans	.....	.....	.....	3,082	.....	3,082	3,563	.....	3,563
Federal Family Education Loans	-22	.....	-22	-81	.....	-81	-46	.....	-46
Other	(**)	1	(**)	11	2	9	14	3	10
Total--Office of Federal Student Aid	5,453	1	5,452	13,855	2	13,853	14,904	3	14,901
Institute of Education Sciences	50	.....	50	191	.....	191	218	.....	218
Departmental Management	41	.....	41	189	.....	189	181	.....	181
Other	41	.....	41	92	.....	92	241	.....	241
Proprietary Receipts from the Public	.....	430	-430	.....	2,837	-2,837	.....	4,568	-4,568
Intrabudgetary Transactions	3	.....	3	69	.....	69	8	.....	8
<b>Total--Department of Education</b>	<b>10,269</b>	<b>431</b>	<b>9,839</b>	<b>30,331</b>	<b>2,840</b>	<b>27,490</b>	<b>31,264</b>	<b>4,573</b>	<b>26,691</b>
<b>Department of Energy:</b>									
National Nuclear Security Administration:									
Naval Reactors	108	.....	108	446	.....	446	450	.....	450
Weapons Activities	975	.....	975	3,780	.....	3,780	3,533	.....	3,533
Defense Nuclear Nonproliferation	155	.....	155	732	.....	732	570	.....	570
Other	53	.....	53	142	.....	142	158	.....	158
Environmental and Other Defense Activities:									

**Table 5. Outlays of the U.S. Government, January 2020 and Other Periods - Continued**

[\$ millions]

Classification	This Month			Current Fiscal Year to Date			Prior Fiscal Year to Date		
	Gross Outlays	Applicable Receipts	Outlays	Gross Outlays	Applicable Receipts	Outlays	Gross Outlays	Applicable Receipts	Outlays
<b>Department of Energy: - Continued</b>									
Defense Environmental Cleanup	534	.....	534	2,091	.....	2,091	1,936	.....	1,936
Other Defense Activities	94	.....	94	316	.....	316	239	.....	239
Defense Nuclear Waste Disposal	(**)	.....	(**)	1	.....	1	1	.....	1
<b>Energy Programs:</b>									
Science	559	.....	559	2,201	.....	2,201	1,953	.....	1,953
Energy Supply	140	.....	140	635	.....	635	553	.....	553
Energy Efficiency and Renewable Energy	155	.....	155	679	.....	679	575	.....	575
Fossil Energy Research and Development	57	.....	57	225	.....	225	213	.....	213
Uranium Enrichment Decontamination and Decommissioning Fund	67	.....	67	264	.....	264	221	.....	221
Advanced Technology Vehicles Manufacturing Loan Program	(**)	.....	(**)	1	.....	1	1	.....	1
Title 17 Innovative Technology Loan Guarantee Program	1	.....	1	7	.....	7	5	.....	5
Other	100	3	97	405	28	378	374	58	316
Total--Energy Programs	1,079	3	1,076	4,418	28	4,390	3,895	58	3,837
Power Marketing Administration	306	304	2	1,385	1,203	182	1,366	1,323	43
Departmental Administration	27	.....	27	115	.....	115	75	.....	75
Proprietary Receipts from the Public	.....	68	-68	.....	882	-882	.....	1,172	-1,172
Intrabudgetary Transactions	-125	.....	-125	-509	.....	-509	-481	.....	-481
<b>Total--Department of Energy</b>	<b>3,205</b>	<b>375</b>	<b>2,830</b>	<b>12,917</b>	<b>2,113</b>	<b>10,804</b>	<b>11,741</b>	<b>2,553</b>	<b>9,188</b>
<b>Department of Health and Human Services:</b>									
Food and Drug Administration	322	1	321	1,012	4	1,008	563	2	561
Health Resources and Services Administration	894	.....	894	3,897	.....	3,897	3,879	.....	3,879
Indian Health Service	393	.....	393	3,323	.....	3,323	1,247	.....	1,247
Centers for Disease Control and Prevention	665	.....	665	2,638	.....	2,638	2,409	.....	2,409
National Institutes of Health	2,932	.....	2,932	12,223	.....	12,223	11,889	.....	11,889
Substance Abuse and Mental Health Services Administration	495	.....	495	1,841	.....	1,841	1,233	.....	1,233
Agency for Healthcare Research and Quality	25	.....	25	106	.....	106	113	.....	113
<b>Centers for Medicare and Medicaid Services:</b>									
Grants to States for Medicaid	34,760	.....	34,760	135,711	.....	135,711	128,813	.....	128,813
Payments to Health Care Trust Funds	36,676	.....	36,676	122,920	.....	122,920	113,620	.....	113,620
Children's Health Insurance Fund	1,354	.....	1,354	5,218	.....	5,218	5,594	.....	5,594
State Grants and Demonstrations	18	.....	18	105	.....	105	132	.....	132
<b>Federal Hospital Insurance Trust Fund:</b>									
Benefit Payments	38,922	.....	38,922	119,251	.....	119,251	102,148	.....	102,148
Administrative Expenses	296	.....	296	1,266	.....	1,266	1,313	.....	1,313
Total--Federal Hospital Insurance Trust Fund	39,218	.....	39,218	120,516	.....	120,516	103,461	.....	103,461
Health Care Fraud and Abuse Control	111	.....	111	601	.....	601	490	.....	490
<b>Federal Supplementary Medical Insurance Trust Fund:</b>									
Benefit Payments	43,430	.....	43,430	137,115	.....	137,115	114,111	.....	114,111
Administrative Expenses	328	.....	328	1,459	.....	1,459	1,242	.....	1,242
<b>Medicare Prescription Drugs:</b>									
Benefit Payments	15,431	.....	15,431	36,588	.....	36,588	26,713	.....	26,713
Total--Federal Supplementary Medical Insurance Trust Fund	59,190	.....	59,190	175,163	.....	175,163	142,065	.....	142,065
Other	10	.....	10	3,617	.....	3,617	5,154	.....	5,154
<b>Total--Centers for Medicare and Medicaid Services</b>	<b>171,337</b>	<b>.....</b>	<b>171,337</b>	<b>563,851</b>	<b>.....</b>	<b>563,851</b>	<b>499,328</b>	<b>.....</b>	<b>499,328</b>
<b>Administration for Children and Families:</b>									
Temporary Assistance for Needy Families	1,418	.....	1,418	6,081	.....	6,081	5,322	.....	5,322
Contingency Fund	46	.....	46	76	.....	76	53	.....	53
Payments to States for Child Support Enforcement and Family Support Programs	350	.....	350	1,234	.....	1,234	1,174	.....	1,174
Low Income Home Energy Assistance	405	.....	405	1,466	.....	1,466	1,529	.....	1,529
Refugee and Entrant Assistance	177	.....	177	725	.....	725	882	.....	882
Child Care Entitlement to States	219	.....	219	911	.....	911	851	.....	851
Payments to States for the Child Care and Development Block Grant	421	.....	421	1,753	.....	1,753	1,167	.....	1,167
Social Services Block Grant	91	.....	91	500	.....	500	547	.....	547
Children and Families Services Programs	1,028	.....	1,028	4,188	.....	4,188	3,992	.....	3,992
Payments to States for Foster Care and Adoption Assistance	717	.....	717	2,744	.....	2,744	2,546	.....	2,546
Other	36	.....	36	197	.....	197	171	.....	171
<b>Total--Administration for Children and Families</b>	<b>4,908</b>	<b>.....</b>	<b>4,908</b>	<b>19,877</b>	<b>.....</b>	<b>19,877</b>	<b>18,233</b>	<b>.....</b>	<b>18,233</b>

**Table 5. Outlays of the U.S. Government, January 2020 and Other Periods - Continued**

[\$ millions]

Classification	This Month			Current Fiscal Year to Date			Prior Fiscal Year to Date		
	Gross Outlays	Applicable Receipts	Outlays	Gross Outlays	Applicable Receipts	Outlays	Gross Outlays	Applicable Receipts	Outlays
<b>Department of Health and Human Services: - Continued</b>									
Administration for Community Living	156	.....	156	685	.....	685	653	.....	653
Departmental Management	311	.....	311	1,308	.....	1,308	1,047	.....	1,047
Other	129	.....	129	431	.....	431	255	.....	255
Proprietary Receipts from the Public	.....	11,367	-11,367	.....	43,832	-43,832	.....	41,322	-41,322
Intrabudgetary Transactions:									
Payments for Health Insurance for the Aged:									
Federal Supplementary Medical Insurance Trust Fund	-30,662	.....	-30,662	-116,902	.....	-116,902	-108,278	.....	-108,278
Payments for Tax and Other Credits:									
Federal Hospital Insurance Trust Fund	-6,016	.....	-6,016	-6,025	.....	-6,025	-5,372	.....	-5,372
Other	-102	.....	-102	-670	.....	-670	-763	.....	-763
<b>Total--Department of Health and Human Services</b>	<b>145,786</b>	<b>11,368</b>	<b>134,418</b>	<b>487,594</b>	<b>43,836</b>	<b>443,759</b>	<b>426,436</b>	<b>41,324</b>	<b>385,112</b>
<b>Department of Homeland Security:</b>									
Departmental Management and Operations	132	.....	132	541	.....	541	375	.....	375
Citizenship and Immigration Services	350	.....	350	1,425	.....	1,425	1,239	.....	1,239
United States Secret Service	187	.....	187	819	.....	819	669	.....	669
Transportation Security Administration	670	.....	670	2,423	.....	2,423	1,941	.....	1,941
Immigration and Customs Enforcement	667	.....	667	2,704	.....	2,704	2,198	.....	2,198
U.S. Customs and Border Protection	1,332	3	1,329	5,623	10	5,613	4,880	7	4,873
United States Coast Guard	895	.....	895	4,084	.....	4,084	3,558	.....	3,558
National Protection and Programs Directorate	174	.....	174	580	.....	580	668	.....	668
Federal Emergency Management Agency:									
State and Local Programs									
Firefighter Assistance Grants	13	.....	13	57	.....	57	114	.....	114
Disaster Relief	1,085	.....	1,085	4,428	.....	4,428	5,445	.....	5,445
National Flood Insurance Fund	91	151	-60	851	394	457	1,134	322	812
Other	80	.....	80	423	.....	423	492	.....	492
<b>Total--Federal Emergency Management Agency</b>	<b>1,271</b>	<b>151</b>	<b>1,119</b>	<b>5,879</b>	<b>394</b>	<b>5,485</b>	<b>7,462</b>	<b>322</b>	<b>7,139</b>
Science and Technology	60	.....	60	246	.....	246	280	.....	280
Domestic Nuclear Detection Office	32	.....	32	95	.....	95	70	.....	70
Other	41	.....	41	170	.....	170	157	.....	157
Proprietary Receipts from the Public	.....	38	-38	.....	315	-315	.....	323	-323
Intrabudgetary Transactions	4	.....	4	68	.....	68	140	.....	140
Offsetting Governmental Receipts	.....	1,059	-1,059	.....	3,987	-3,987	.....	3,215	-3,215
<b>Total--Department of Homeland Security</b>	<b>5,814</b>	<b>1,251</b>	<b>4,563</b>	<b>24,656</b>	<b>4,706</b>	<b>19,950</b>	<b>23,637</b>	<b>3,867</b>	<b>19,770</b>
<b>Department of Housing and Urban Development:</b>									
Public and Indian Housing Programs:									
Tenant Based Rental Assistance	1,924	.....	1,924	7,524	.....	7,524	7,231	.....	7,231
Housing Certificate Fund	14	.....	14	78	.....	78	46	.....	46
Public Housing Capital Fund	146	.....	146	784	.....	784	704	.....	704
Public Housing Operating Fund	458	.....	458	1,590	.....	1,590	1,564	.....	1,564
Revitalization of Severely Distressed Public Housing (Hope VI)	1	.....	1	2	.....	2	6	.....	6
Native American Housing Block Grant	45	.....	45	167	.....	167	181	.....	181
Other	10	.....	10	63	.....	63	52	.....	52
<b>Total--Public and Indian Housing Programs</b>	<b>2,599</b>	<b>.....</b>	<b>2,599</b>	<b>10,207</b>	<b>.....</b>	<b>10,207</b>	<b>9,784</b>	<b>.....</b>	<b>9,784</b>
Community Planning and Development:									
Housing Opportunities for Persons with AIDS	25	.....	25	88	.....	88	96	.....	96
Community Development Fund	429	.....	429	1,676	.....	1,676	1,807	.....	1,807
Home Investment Partnership Program	68	.....	68	281	.....	281	271	.....	271
Neighborhood Stabilization Program	2	.....	2	9	.....	9	6	.....	6
Homeless Assistance Grants	175	.....	175	742	.....	742	719	.....	719
Other	15	.....	15	87	.....	87	38	.....	38
<b>Total--Community Planning and Development</b>	<b>715</b>	<b>.....</b>	<b>715</b>	<b>2,883</b>	<b>.....</b>	<b>2,883</b>	<b>2,936</b>	<b>.....</b>	<b>2,936</b>
Housing Programs:									
Credit Accounts:									
FHA-Mutual Mortgage Insurance Fund, Program Account	12	.....	12	38	.....	38	32	.....	32
FHA-Mutual Mortgage Insurance Capital Reserve Account	-865	.....	-865	-2,555	.....	-2,555	-2,086	.....	-2,086
FHA-Mutual Mortgage and Cooperative Housing Insurance Fund, Liquidating Account	1	1	(**)	4	4	(**)	6	5	1
FHA-General and Special Risk Fund, Liquidating Account	13	16	-3	38	57	-19	34	61	-28
Housing for the Elderly or Handicapped Fund, Liquidating Account	-10	4	-14	-40	22	-62	-45	23	-67

**Table 5. Outlays of the U.S. Government, January 2020 and Other Periods - Continued**

[\$ millions]

Classification	This Month			Current Fiscal Year to Date			Prior Fiscal Year to Date		
	Gross Outlays	Applicable Receipts	Outlays	Gross Outlays	Applicable Receipts	Outlays	Gross Outlays	Applicable Receipts	Outlays
<b>Department of Housing and Urban Development: - Continued</b>									
HUD Project-Based Rental Assistance	1,042	.....	1,042	4,150	.....	4,150	3,989	.....	3,989
Housing for the Elderly	65	.....	65	253	.....	253	237	.....	237
Housing for Persons with Disabilities	16	.....	16	64	.....	64	59	.....	59
Other Assisted Housing Programs	5	.....	5	24	.....	24	31	.....	31
Other	6	6	(**)	16	14	2	8	14	-6
<b>Total--Housing Programs</b>	<b>285</b>	<b>27</b>	<b>258</b>	<b>1,991</b>	<b>97</b>	<b>1,894</b>	<b>2,263</b>	<b>102</b>	<b>2,161</b>
Government National Mortgage Association:									
Guarantees of Mortgage-Backed Securities	-22	(**)	-22	-70	1	-71	-95	1	-96
Management and Administration	140	.....	140	613	.....	613	538	.....	538
Other	15	.....	15	61	.....	61	68	.....	68
Proprietary Receipts from the Public:									
FHA-General and Special Risk Fund	.....	49	-49	.....	222	-222	.....	182	-182
Other	.....	-14	14	.....	2	-2	.....	3	-3
Intrabudgetary Transactions	(**)	.....	(**)	-2	.....	-2	-4	.....	-4
Offsetting Governmental Receipts	.....	1	-1	.....	5	-5	.....	5	-5
<b>Total--Department of Housing and Urban Development</b>	<b>3,731</b>	<b>64</b>	<b>3,667</b>	<b>15,684</b>	<b>327</b>	<b>15,357</b>	<b>15,491</b>	<b>294</b>	<b>15,197</b>
<b>Department of the Interior:</b>									
Land and Minerals Management:									
Bureau of Land Management:									
Management of Lands and Resources	83	.....	83	373	.....	373	295	.....	295
Other	38	7	31	142	20	122	101	20	82
Bureau of Ocean Energy Management	15	.....	15	41	.....	41	29	.....	29
Office of Surface Mining Reclamation and Enforcement	269	.....	269	434	.....	434	406	.....	406
<b>Total--Land and Minerals Management</b>	<b>405</b>	<b>7</b>	<b>398</b>	<b>990</b>	<b>20</b>	<b>970</b>	<b>830</b>	<b>20</b>	<b>811</b>
Water and Science:									
Bureau of Reclamation:									
Water and Related Resources	72	.....	72	413	.....	413	344	.....	344
Other	128	36	93	263	72	191	205	132	74
Central Utah Project	4	.....	4	6	.....	6	13	.....	13
United States Geological Survey	61	.....	61	418	.....	418	361	.....	361
<b>Total--Water and Science</b>	<b>266</b>	<b>36</b>	<b>230</b>	<b>1,099</b>	<b>72</b>	<b>1,028</b>	<b>924</b>	<b>132</b>	<b>792</b>
Fish and Wildlife and Parks:									
United States Fish and Wildlife Service	307	.....	307	1,037	.....	1,037	886	.....	886
National Park Service	247	.....	247	1,157	.....	1,157	883	.....	883
<b>Total--Fish and Wildlife and Parks</b>	<b>554</b>	.....	<b>554</b>	<b>2,194</b>	.....	<b>2,194</b>	<b>1,770</b>	.....	<b>1,770</b>
Indian Affairs:									
Bureau of Indian Affairs and Bureau of Indian Education	258	(**)	258	822	(**)	822	777	(**)	776
<b>Total--Indian Affairs</b>	<b>258</b>	<b>(**)</b>	<b>258</b>	<b>822</b>	<b>(**)</b>	<b>822</b>	<b>777</b>	<b>(**)</b>	<b>776</b>
Departmental Offices:									
Mineral Leasing and Associated Payments	134	.....	134	630	.....	630	1,081	.....	1,081
Other	23	.....	23	87	.....	87	86	.....	86
Insular Affairs	43	.....	43	158	.....	158	122	.....	122
Office of the Special Trustee for American Indians	7	.....	7	39	.....	39	35	.....	35
Department-Wide Programs	43	.....	43	407	.....	407	420	.....	420
<b>Total--Departmental Offices</b>	<b>250</b>	.....	<b>250</b>	<b>1,321</b>	.....	<b>1,321</b>	<b>1,743</b>	.....	<b>1,743</b>
Other	86	.....	86	<sup>1</sup> 280	(**)	280	206	.....	206
Proprietary Receipts from the Public	.....	453	-453	.....	1,637	<sup>2</sup> -1,637	.....	2,542	-2,542
Intrabudgetary Transactions	-69	.....	-69	-105	.....	-105	841	.....	841
<b>Total--Department of the Interior</b>	<b>1,750</b>	<b>497</b>	<b>1,254</b>	<b>6,600</b>	<b>1,728</b>	<b>4,872</b>	<b>7,090</b>	<b>2,694</b>	<b>4,396</b>
<b>Department of Justice:</b>									
General Administration	118	.....	118	617	.....	617	454	.....	454
Legal Activities and U.S. Marshals:									
General Legal Activities	217	.....	217	688	.....	688	1,821	.....	1,821
United States Attorneys	115	.....	115	607	.....	607	591	.....	591
United States Marshals Service	112	.....	112	447	.....	447	425	.....	425
Assets Forfeiture Fund	66	.....	66	343	.....	343	948	.....	948
Other	217	.....	217	787	.....	787	628	.....	628
Federal Bureau of Investigation	827	.....	827	3,332	.....	3,332	3,067	.....	3,067
Drug Enforcement Administration	198	.....	198	898	.....	898	757	.....	757
Bureau of Alcohol, Tobacco, Firearms, and Explosives	95	.....	95	439	.....	439	406	.....	406
Federal Prison System	649	27	622	2,735	116	2,619	2,279	122	2,156
Office of Justice Programs:									



**Table 5. Outlays of the U.S. Government, January 2020 and Other Periods - Continued**

[\$ millions]

Classification	This Month			Current Fiscal Year to Date			Prior Fiscal Year to Date		
	Gross Outlays	Applicable Receipts	Outlays	Gross Outlays	Applicable Receipts	Outlays	Gross Outlays	Applicable Receipts	Outlays
<b>Department of Justice: - Continued</b>									
State and Local Law Enforcement Assistance	222	.....	222	673	.....	673	545	.....	545
Community Oriented Policing Services	16	.....	16	54	.....	54	58	.....	58
Crime Victims Fund	199	.....	199	939	.....	939	856	.....	856
Other	81	.....	81	298	.....	298	327	.....	327
Other	53	.....	53	245	.....	245	176	.....	176
Proprietary Receipts from the Public	.....	17	-17	.....	125	-125	.....	1,282	-1,282
Intrabudgetary Transactions	594	.....	594	-26	.....	-26	-424	.....	-424
Offsetting Governmental Receipts	.....	64	-64	.....	227	-227	.....	208	-208
<b>Total--Department of Justice</b>	<b>3,779</b>	<b>108</b>	<b>3,671</b>	<b>13,076</b>	<b>468</b>	<b>12,608</b>	<b>12,912</b>	<b>1,613</b>	<b>11,299</b>
<b>Department of Labor:</b>									
Employment and Training Administration:									
Training and Employment Services	279	.....	279	1,131	.....	1,131	1,055	.....	1,055
Office of Job Corps	163	.....	163	559	.....	559	514	.....	514
Community Service Employment for Older Americans	32	.....	32	129	.....	129	129	.....	129
Federal Unemployment Benefits and Allowances	26	.....	26	113	.....	113	121	.....	121
Federal Additional Unemployment Compensation Program-Recovery Act	(**)	.....	(**)	(**)	.....	(**)	-1	.....	-1
State Unemployment Insurance and Employment Service Operations	-37	.....	-37	-52	.....	-52	-217	.....	-217
Payments to the Unemployment Trust Fund	.....	.....	.....	1	.....	1	2	.....	2
Program Administration	8	.....	8	38	.....	38	40	.....	40
Unemployment Trust Fund:									
Federal-State Unemployment Insurance:									
State Unemployment Benefits	3,042	.....	3,042	9,375	.....	9,375	9,283	.....	9,283
State Administrative Expenses	310	.....	310	1,191	.....	1,191	1,362	.....	1,362
Federal Administrative Expenses	55	.....	55	145	.....	145	268	.....	268
Other	(**)	.....	(**)	1	.....	1	3	.....	3
<b>Total--Unemployment Trust Fund</b>	<b>3,407</b>	<b>.....</b>	<b>3,407</b>	<b>10,712</b>	<b>.....</b>	<b>10,712</b>	<b>10,916</b>	<b>.....</b>	<b>10,916</b>
Other	.....	.....	.....	.....	.....	.....	17	.....	17
<b>Total--Employment and Training Administration</b>	<b>3,878</b>	<b>.....</b>	<b>3,878</b>	<b>12,631</b>	<b>.....</b>	<b>12,631</b>	<b>12,576</b>	<b>.....</b>	<b>12,576</b>
Pension Benefit Guaranty Corporation	551	106	445	2,174	5,863	-3,689	2,155	5,082	-2,927
Office of Workers' Compensation Programs:									
Special Benefits	163	.....	163	-532	.....	-532	-823	.....	-823
Energy Employees Occupational Illness Compensation Fund	150	.....	150	545	.....	545	455	.....	455
Special Benefits for Disabled Coal Miners	5	.....	5	21	.....	21	24	.....	24
Black Lung Disability Trust Fund	13	.....	13	65	.....	65	74	.....	74
Other	24	.....	24	122	.....	122	132	.....	132
Wage and Hour Division	29	.....	29	87	.....	87	91	.....	91
Occupational Safety and Health Administration	37	.....	37	187	.....	187	193	.....	193
Mine Safety and Health Administration	23	.....	23	118	.....	118	129	.....	129
Bureau of Labor Statistics	38	.....	38	181	.....	181	181	.....	181
Departmental Management	53	.....	53	243	.....	243	19	.....	19
Other	24	.....	24	113	.....	113	113	.....	113
Proprietary Receipts from the Public	.....	(**)	(**)	.....	2	-2	.....	1	-1
Intrabudgetary Transactions	(**)	.....	(**)	-72	.....	-72	-88	.....	-88
<b>Total--Department of Labor</b>	<b>4,989</b>	<b>107</b>	<b>4,882</b>	<b>15,883</b>	<b>5,865</b>	<b>10,018</b>	<b>15,231</b>	<b>5,084</b>	<b>10,147</b>
<b>Department of State:</b>									
Administration of Foreign Affairs:									
Diplomatic and Consular Programs	796	.....	796	2,777	.....	2,777	3,313	.....	3,313
Educational and Cultural Exchange Programs	62	.....	62	264	.....	264	223	.....	223
Embassy Security, Construction, and Maintenance	160	.....	160	839	.....	839	508	.....	508
Payment to Foreign Service Retirement and Disability Fund	.....	.....	.....	288	.....	288	30	.....	30
Foreign Service Retirement and Disability Fund	84	.....	84	332	.....	332	322	.....	322
Other	433	.....	433	1,524	.....	1,524	886	.....	886
<b>Total--Administration of Foreign Affairs</b>	<b>1,535</b>	<b>.....</b>	<b>1,535</b>	<b>6,024</b>	<b>.....</b>	<b>6,024</b>	<b>5,281</b>	<b>.....</b>	<b>5,281</b>
International Organizations and Conferences	177	.....	177	1,801	.....	1,801	1,507	.....	1,507
Global Health and Child Survival	886	.....	886	3,239	.....	3,239	2,901	.....	2,901
Migration and Refugee Assistance	104	.....	104	703	.....	703	875	.....	875
International Narcotics Control and Law Enforcement	85	.....	85	305	.....	305	349	.....	349
Andean Counterdrug Programs	(**)	.....	(**)	(**)	.....	(**)	(**)	.....	(**)
Other	31	.....	31	155	.....	155	155	.....	155
Proprietary Receipts from the Public	.....	361	-361	.....	1,093	-1,093	.....	1,001	-1,001
Intrabudgetary Transactions	-45	.....	-45	-361	.....	-361	-94	.....	-94
<b>Total--Department of State</b>	<b>2,772</b>	<b>361</b>	<b>2,411</b>	<b>11,866</b>	<b>1,093</b>	<b>10,773</b>	<b>10,974</b>	<b>1,001</b>	<b>9,973</b>

**Table 5. Outlays of the U.S. Government, January 2020 and Other Periods - Continued**

[\$ millions]

Classification	This Month			Current Fiscal Year to Date			Prior Fiscal Year to Date		
	Gross Outlays	Applicable Receipts	Outlays	Gross Outlays	Applicable Receipts	Outlays	Gross Outlays	Applicable Receipts	Outlays
<b>Department of Transportation:</b>									
Office of the Secretary	74	.....	74	236	.....	236	215	.....	215
Federal Aviation Administration:									
Operations	59	.....	59	168	.....	168	115	.....	115
Airport and Airway Trust Fund:									
Grants-In-Aid for Airports	-110	.....	-110	917	.....	917	1,296	.....	1,296
Facilities and Equipment	238	.....	238	920	.....	920	814	.....	814
Research, Engineering, and Development	17	.....	17	52	.....	52	46	.....	46
Trust Fund Share of FAA Operations	800	.....	800	3,333	.....	3,333	2,650	.....	2,650
Total--Airport and Airway Trust Fund	945	.....	945	5,223	.....	5,223	4,807	.....	4,807
Other	414	13	401	451	20	431	64	13	51
Total--Federal Aviation Administration	1,418	13	1,405	5,841	20	5,821	4,985	13	4,972
Federal Highway Administration:									
Highway Trust Fund:									
Federal-Aid Highways	2,528	.....	2,528	14,104	.....	14,104	13,485	.....	13,485
Other	(**)	.....	(**)	2	.....	2	1	.....	1
Other Programs	112	.....	112	632	.....	632	372	.....	372
Total--Federal Highway Administration	2,640	.....	2,640	14,738	.....	14,738	13,858	.....	13,858
Federal Motor Carrier Safety Administration	50	.....	50	195	.....	195	182	.....	182
National Highway Traffic Safety Administration	75	.....	75	380	.....	380	382	.....	382
Federal Railroad Administration:									
Capital and Debt Service Grants to the National Railroad Passenger Corporation									
Other	.....	.....	.....	1	.....	1	1	.....	1
Other	26	.....	26	105	.....	105	442	.....	442
Total--Federal Railroad Administration	26	.....	26	106	.....	106	443	.....	443
Federal Transit Administration:									
Formula Grants	-1	.....	-1	(**)	.....	(**)	3	.....	3
Capital Investment Grants	146	.....	146	484	.....	484	370	.....	370
Transit Formula Grants	843	.....	843	3,217	.....	3,217	2,775	.....	2,775
Other	86	.....	86	462	.....	462	314	.....	314
Total--Federal Transit Administration	1,074	.....	1,074	4,163	.....	4,163	3,462	.....	3,462
Maritime Administration	80	(**)	80	183	(**)	183	-34	3	-36
Other	43	4	39	190	15	175	169	10	159
Proprietary Receipts from the Public	.....	20	-20	.....	59	-59	.....	36	-36
Intrabudgetary Transactions:									
Other	(**)	.....	(**)	(**)	.....	(**)	(**)	.....	(**)
Offsetting Governmental Receipts	.....	(**)	(**)	.....	(**)	(**)	.....	3	-3
<b>Total--Department of Transportation</b>	<b>5,480</b>	<b>37</b>	<b>5,443</b>	<b>26,034</b>	<b>95</b>	<b>25,939</b>	<b>23,662</b>	<b>65</b>	<b>23,597</b>
<b>Department of the Treasury:</b>									
Departmental Offices:									
Exchange Stabilization Fund	.....	40	-40	21	135	-115	18	190	-172
Housing and Economic Recovery Programs	(**)	.....	(**)	(**)	.....	(**)	(**)	.....	(**)
Troubled Asset Relief Program	57	.....	57	310	.....	310	480	.....	480
Other	143	.....	143	470	.....	470	471	.....	471
Bureau of the Fiscal Service:									
Payment to the Resolution Funding Corporation	652	.....	652	1,314	.....	1,314	1,314	.....	1,314
Financial Agent Services	63	.....	63	262	.....	262	257	.....	257
Claims, Judgements, and Relief Acts	179	.....	179	510	.....	510	695	.....	695
Other	49	(**)	48	1,198	(**)	1,198	343	(**)	342
Total--Bureau of the Fiscal Service	943	(**)	943	3,285	(**)	3,284	2,609	(**)	2,608
Federal Financing Bank	-67	.....	-67	-426	.....	-426	-720	.....	-720
Alcohol and Tobacco Tax and Trade Bureau:									
Salaries and Expenses	9	.....	9	41	.....	41	38	.....	38
Internal Revenue Collections for Puerto Rico	42	.....	42	155	.....	155	141	.....	141
Bureau of Engraving and Printing	-17	.....	-17	7	.....	7	2	.....	2
United States Mint	248	283	-35	625	642	-17	517	708	-191
Internal Revenue Service:									
Taxpayer Services	202	.....	202	858	.....	858	827	.....	827
Enforcement	349	.....	349	1,609	.....	1,609	1,543	.....	1,543
Operations Support	402	.....	402	1,537	.....	1,537	1,317	.....	1,317
Build America Bond Payments, Recovery Act	191	.....	191	927	.....	927	1,002	.....	1,002
Refundable Premium Tax Credits and Cost Sharing Reductions	3,641	.....	3,641	17,072	.....	17,072	16,613	.....	16,613

**Table 5. Outlays of the U.S. Government, January 2020 and Other Periods - Continued**

[\$ millions]

Classification	This Month			Current Fiscal Year to Date			Prior Fiscal Year to Date		
	Gross Outlays	Applicable Receipts	Outlays	Gross Outlays	Applicable Receipts	Outlays	Gross Outlays	Applicable Receipts	Outlays
<b>Department of the Treasury: - Continued</b>									
Payment Where Earned Income Credit Exceeds Liability for Tax	23	.....	23	334	.....	334	429	.....	429
Payment Where Child Tax Credit Exceeds Liability for Tax	24	.....	24	307	.....	307	192	.....	192
Payment Where American Opportunity Tax Credit Exceeds Liability for Tax	41	.....	41	76	.....	76	56	.....	56
Refunding Internal Revenue Collections, Interest	112	.....	112	695	.....	695	539	.....	539
Other	620	(**)	620	6,029	(**)	6,029	1,345	(**)	1,345
<b>Total--Internal Revenue Service</b>	<b>5,604</b>	<b>(**)</b>	<b>5,604</b>	<b>29,443</b>	<b>(**)</b>	<b>29,443</b>	<b>23,863</b>	<b>(**)</b>	<b>23,863</b>
Comptroller of the Currency	105	-2	107	388	18	370	391	21	370
Interest on the Public Debt:									
Interest on Treasury Debt Securities (Gross):									
Public Issues (Accrual Basis)	30,959	.....	30,959	129,698	.....	129,698	121,339	.....	121,339
Special Issues (Cash Basis)	2,944	.....	2,944	64,392	.....	64,392	70,693	.....	70,693
<b>Total--Interest on Treasury Debt Securities (Gross)</b>	<b>33,903</b>	<b>.....</b>	<b>33,903</b>	<b>194,091</b>	<b>.....</b>	<b>194,091</b>	<b>192,032</b>	<b>.....</b>	<b>192,032</b>
<b>Total--Interest on the Public Debt</b>	<b>33,903</b>	<b>.....</b>	<b>33,903</b>	<b>194,091</b>	<b>.....</b>	<b>194,091</b>	<b>192,032</b>	<b>.....</b>	<b>192,032</b>
Other	10	.....	10	41	.....	41	38	.....	38
Proprietary Receipts from the Public	.....	115	-115	.....	1,469	-1,469	.....	7,842	-7,842
Intrabudgetary Transactions	-266	.....	-266	-608	.....	-608	-711	.....	-711
<b>Total--Department of the Treasury</b>	<b>40,715</b>	<b>436</b>	<b>40,279</b>	<b>227,842</b>	<b>2,265</b>	<b>225,577</b>	<b>219,169</b>	<b>8,762</b>	<b>210,407</b>
<b>Department of Veterans Affairs:</b>									
Joint DOD-VA Medical Facility Demonstration Fund	38	.....	38	145	.....	145	149	.....	149
Veterans Health Administration:									
Veterans Choice Fund, Veterans Health Administration	18	.....	18	79	.....	79	1,480	.....	1,480
Medical Services	5,969	.....	5,969	23,638	.....	23,638	20,923	.....	20,923
Medical Support and Compliance	590	.....	590	2,526	.....	2,526	2,292	.....	2,292
Medical Facilities	539	.....	539	2,094	.....	2,094	1,995	.....	1,995
Other	91	37	53	463	164	299	433	164	269
Benefits Programs:									
Public Enterprise Funds:									
Housing Accounts	(**)	1	-1	(**)	3	-3	(**)	4	-4
Other	71	74	-4	263	574	-311	274	277	-3
Compensation and Pensions	8,955	.....	8,955	43,022	.....	43,022	31,960	.....	31,960
Readjustment Benefits	1,076	.....	1,076	5,170	.....	5,170	5,079	.....	5,079
Veterans Housing Benefit Program Fund	5	.....	5	5	.....	5	28	.....	28
Insurance Funds:									
National Service Life	59	.....	59	211	.....	211	234	.....	234
Veterans Special Life	19	1	18	69	31	38	60	35	25
Other	9	.....	9	34	.....	34	30	.....	30
<b>Total--Benefits Programs</b>	<b>10,194</b>	<b>76</b>	<b>10,118</b>	<b>48,775</b>	<b>608</b>	<b>48,167</b>	<b>37,665</b>	<b>316</b>	<b>37,349</b>
Departmental Administration:									
Construction	79	.....	79	300	.....	300	496	.....	496
Information Technology Systems	345	.....	345	1,455	.....	1,455	1,514	.....	1,514
General Operating Expenses	378	(**)	378	1,548	(**)	1,548	1,427	(**)	1,427
Other	220	.....	220	958	.....	958	560	.....	560
Proprietary Receipts from the Public:									
National Service Life	.....	-4	4	.....	8	-8	.....	14	-14
Other	.....	368	-368	.....	1,472	-1,472	.....	1,339	-1,339
Intrabudgetary Transactions	1	.....	1	15	.....	15	-5	.....	-5
<b>Total--Department of Veterans Affairs</b>	<b>18,461</b>	<b>478</b>	<b>17,983</b>	<b>81,995</b>	<b>2,252</b>	<b>79,744</b>	<b>68,928</b>	<b>1,833</b>	<b>67,095</b>
<b>Corps of Engineers:</b>									
Construction	166	.....	166	857	.....	857	423	.....	423
Operation and Maintenance	288	.....	288	1,277	.....	1,277	1,060	.....	1,060
Flood Control and Coastal Emergencies	52	.....	52	228	.....	228	306	.....	306
Rivers and Harbors Contributed Funds	48	.....	48	175	.....	175	116	.....	116
Other	253	.....	253	588	.....	588	587	.....	587
Proprietary Receipts from the Public	.....	76	-76	.....	215	-215	.....	225	-225
Intrabudgetary Transactions	(**)	.....	(**)	(**)	.....	(**)	1	.....	1
<b>Total--Corps of Engineers</b>	<b>807</b>	<b>76</b>	<b>731</b>	<b>3,125</b>	<b>215</b>	<b>2,910</b>	<b>2,493</b>	<b>225</b>	<b>2,269</b>
<b>Other Defense Civil Programs:</b>									
Military Retirement:									
Payment to Military Retirement Fund	.....	.....	.....	91,873	.....	91,873	87,996	.....	87,996
Military Retirement Fund	5,203	.....	5,203	25,347	.....	25,347	19,951	.....	19,951

**Table 5. Outlays of the U.S. Government, January 2020 and Other Periods - Continued**

[\$ millions]

Classification	This Month			Current Fiscal Year to Date			Prior Fiscal Year to Date		
	Gross Outlays	Applicable Receipts	Outlays	Gross Outlays	Applicable Receipts	Outlays	Gross Outlays	Applicable Receipts	Outlays
<b>Other Defense Civil Programs: - Continued</b>									
Retiree Health Care:									
Payment to Department of Defense Medicare-Eligible Retiree Health Care Fund	.....	.....	.....	6,637	.....	6,637	5,720	.....	5,720
Department of Defense Medicare-Eligible Retiree Health Care Fund	1,375	.....	1,375	4,060	.....	4,060	3,748	.....	3,748
Educational Benefits	11	.....	11	73	.....	73	79	.....	79
Other	43	.....	43	110	.....	110	108	.....	108
Proprietary Receipts from the Public	.....	2	-2	.....	7	-7	.....	8	-8
Intrabudgetary Transactions	-439	.....	-439	-101,066	.....	-101,066	-95,980	.....	-95,980
<b>Total--Other Defense Civil Programs</b>	<b>6,193</b>	<b>2</b>	<b>6,191</b>	<b>27,033</b>	<b>7</b>	<b>27,026</b>	<b>21,623</b>	<b>8</b>	<b>21,615</b>
<b>Environmental Protection Agency:</b>									
Science and Technology	52	.....	52	224	.....	224	145	.....	145
Environmental Programs and Management	180	.....	180	842	.....	842	781	.....	781
State and Tribal Assistance Grants	482	.....	482	1,739	.....	1,739	1,667	.....	1,667
Payment to the Hazardous Substance Superfund	90	.....	90	422	.....	422	246	.....	246
Hazardous Substance Superfund	113	.....	113	494	.....	494	337	.....	337
Other	31	27	4	72	37	36	22	18	4
Proprietary Receipts from the Public	.....	25	-25	.....	109	-109	.....	62	-62
Intrabudgetary Transactions	-68	.....	-68	-376	.....	-376	-189	.....	-189
Offsetting Governmental Receipts	.....	3	-3	.....	7	-7	.....	6	-6
<b>Total--Environmental Protection Agency</b>	<b>881</b>	<b>55</b>	<b>826</b>	<b>3,416</b>	<b>153</b>	<b>3,263</b>	<b>3,009</b>	<b>87</b>	<b>2,922</b>
<b>Executive Office of the President:</b>									
The White House	5	.....	5	21	.....	21	14	.....	14
Office of Management and Budget	8	.....	8	35	.....	35	30	.....	30
Unanticipated Needs	(**)	.....	(**)	7	.....	7	8	.....	8
Other	20	.....	20	69	.....	69	66	.....	66
Proprietary Receipts from the Public	.....	(**)	(**)	.....	(**)	(**)	.....	(**)	(**)
Intrabudgetary Transactions	(**)	.....	(**)	(**)	.....	(**)	(**)	.....	(**)
<b>Total--Executive Office of the President</b>	<b>32</b>	<b>(**)</b>	<b>32</b>	<b>132</b>	<b>(**)</b>	<b>131</b>	<b>119</b>	<b>(**)</b>	<b>119</b>
<b>General Services Administration:</b>									
Real Property Activities	-64	.....	-64	-169	.....	-169	539	.....	539
Supply and Technology Activities	26	.....	26	75	.....	75	-139	.....	-139
General Activities	19	.....	19	90	.....	90	139	.....	139
Proprietary Receipts from the Public	.....	5	-5	.....	42	-42	.....	-1	1
Intrabudgetary Transactions	-4	.....	-4	-6	.....	-6	-11	.....	-11
<b>Total--General Services Administration</b>	<b>-22</b>	<b>5</b>	<b>-27</b>	<b>-10</b>	<b>42</b>	<b>-52</b>	<b>527</b>	<b>-1</b>	<b>528</b>
<b>International Assistance Programs:</b>									
Millennium Challenge Corporation	41	.....	41	185	.....	185	257	.....	257
International Security Assistance:									
Foreign Military Financing Program	3,033	.....	3,033	4,978	.....	4,978	2,177	.....	2,177
Economic Support Fund	310	.....	310	1,797	.....	1,797	1,962	.....	1,962
Other	190	7	183	464	7	457	510	7	503
<b>Total--International Security Assistance</b>	<b>3,533</b>	<b>7</b>	<b>3,526</b>	<b>7,239</b>	<b>7</b>	<b>7,232</b>	<b>4,648</b>	<b>7</b>	<b>4,642</b>
Multilateral Assistance:									
Other	46	.....	46	282	.....	282	297	.....	297
<b>Total--Multilateral Assistance</b>	<b>46</b>	<b>.....</b>	<b>46</b>	<b>282</b>	<b>.....</b>	<b>282</b>	<b>297</b>	<b>.....</b>	<b>297</b>
Agency for International Development:									
Development Assistance Program	200	.....	200	778	.....	778	742	.....	742
Assistance for Europe, Eurasia and Central Asia	41	.....	41	234	.....	234	184	.....	184
International Disaster Assistance	530	.....	530	1,644	.....	1,644	1,109	.....	1,109
Operating Expenses	139	.....	139	467	.....	467	439	.....	439
Other	-405	81	-486	5	110	-105	444	130	314
Proprietary Receipts from the Public	.....	-28	28	.....	25	-25	.....	109	-109
Intrabudgetary Transactions	4	.....	4	1	.....	1	-3	.....	-3
<b>Total--Agency for International Development</b>	<b>510</b>	<b>53</b>	<b>457</b>	<b>3,128</b>	<b>135</b>	<b>2,993</b>	<b>2,916</b>	<b>239</b>	<b>2,677</b>
Overseas Private Investment Corporation:									
Overseas Private Investment Corporation Accounts	5	.....	5	32	38	-6	51	38	13
Proprietary Receipts from the Public	.....	.....	.....	.....	57	-57	.....	107	-107
<b>Total--Overseas Private Investment Corporation</b>	<b>5</b>	<b>.....</b>	<b>5</b>	<b>32</b>	<b>96</b>	<b>-63</b>	<b>51</b>	<b>146</b>	<b>-94</b>
Peace Corps	39	(**)	39	148	1	147	122	1	122
Military Sales Program:									
Foreign Military Sales Trust Fund	2,227	.....	2,227	11,836	.....	11,836	11,201	.....	11,201

**Table 5. Outlays of the U.S. Government, January 2020 and Other Periods - Continued**

[\$ millions]

Classification	This Month			Current Fiscal Year to Date			Prior Fiscal Year to Date		
	Gross Outlays	Applicable Receipts	Outlays	Gross Outlays	Applicable Receipts	Outlays	Gross Outlays	Applicable Receipts	Outlays
<b>International Assistance Programs: - Continued</b>									
Other	20	3	17	80	3	78	61	(**)	61
Proprietary Receipts from the Public	.....	3,812	-3,812	.....	17,110	-17,110	.....	14,868	-14,868
Other	15	72	-57	54	74	-20	38	2	36
<b>Total--International Assistance Programs</b>	<b>6,436</b>	<b>3,947</b>	<b>2,489</b>	<b>22,985</b>	<b>17,425</b>	<b>5,560</b>	<b>19,592</b>	<b>15,262</b>	<b>4,330</b>
<b>National Aeronautics and Space Administration:</b>									
Science	497	.....	497	2,210	.....	2,210	1,949	.....	1,949
Aeronautics	59	.....	59	276	.....	276	195	.....	195
Exploration	284	.....	284	1,593	.....	1,593	1,216	.....	1,216
Cross Agency Support	141	.....	141	864	.....	864	1,036	.....	1,036
Space Operations	236	.....	236	1,661	.....	1,661	1,544	.....	1,544
Other	119	.....	119	586	.....	586	424	.....	424
Proprietary Receipts from the Public	.....	19	-19	.....	19	-19	.....	1	-1
Intrabudgetary Transactions	(**)	.....	(**)	(**)	.....	(**)	(**)	.....	(**)
<b>Total--National Aeronautics and Space Administration</b>	<b>1,336</b>	<b>19</b>	<b>1,318</b>	<b>7,190</b>	<b>19</b>	<b>7,171</b>	<b>6,365</b>	<b>1</b>	<b>6,364</b>
<b>National Science Foundation:</b>									
Research and Related Activities	444	.....	444	1,878	.....	1,878	1,727	.....	1,727
Education and Human Resources	79	.....	79	313	.....	313	295	.....	295
Other	59	.....	59	215	.....	215	191	.....	191
Proprietary Receipts from the Public	.....	3	-3	.....	5	-5	.....	18	-18
<b>Total--National Science Foundation</b>	<b>581</b>	<b>3</b>	<b>578</b>	<b>2,406</b>	<b>5</b>	<b>2,401</b>	<b>2,213</b>	<b>18</b>	<b>2,196</b>
<b>Office of Personnel Management:</b>									
Government Payment for Annuityants, Employees Health and Life Insurance Benefits									
Life Insurance Benefits	1,073	.....	1,073	4,351	.....	4,351	4,391	.....	4,391
Postal Service Retiree Health Benefits Fund	325	.....	325	1,273	.....	1,273	1,241	.....	1,241
Civil Service Retirement and Disability Fund	7,848	.....	7,848	30,251	.....	30,251	29,279	.....	29,279
Employees Life Insurance Fund	249	308	-59	1,008	1,267	-259	1,011	1,236	-226
Employees and Retired Employees Health Benefits Fund	4,852	4,621	231	19,549	18,987	562	18,838	18,622	216
Other	30	.....	30	35	.....	35	141	.....	141
Proprietary Receipts from the Public	.....	(**)	(**)	.....	(**)	(**)	.....	1	-1
Intrabudgetary Transactions:									
Postal Service Contributions	(**)	.....	(**)	-595	.....	-595	-636	.....	-636
Civil Service Retirement and Disability Fund:									
Other	-3	.....	-3	-13	.....	-13	-12	.....	-12
<b>Total--Office of Personnel Management</b>	<b>14,374</b>	<b>4,929</b>	<b>9,445</b>	<b>55,858</b>	<b>20,254</b>	<b>35,604</b>	<b>54,252</b>	<b>19,859</b>	<b>34,393</b>
<b>Small Business Administration:</b>									
Salaries and Expenses	50	.....	50	232	(**)	232	249	(**)	249
Business Loans Program	6	(**)	5	12	(**)	12	1	(**)	1
Disaster Loans Program	6	(**)	6	26	(**)	26	99	(**)	98
Other	23	1	21	87	7	80	65	6	59
Proprietary Receipts from the Public	.....	-1	1	.....	-2	2	.....	-23	23
Intrabudgetary Transactions	(**)	.....	(**)	(**)	.....	(**)	(**)	.....	(**)
<b>Total--Small Business Administration</b>	<b>85</b>	<b>(**)</b>	<b>85</b>	<b>357</b>	<b>6</b>	<b>352</b>	<b>414</b>	<b>-17</b>	<b>431</b>
<b>Social Security Administration:</b>									
Payments to Social Security Trust Funds	10,143	.....	10,143	19,181	.....	19,181	17,843	.....	17,843
Supplemental Security Income Program	4,982	.....	4,982	24,479	.....	24,479	19,733	.....	19,733
Federal Old-Age and Survivors Insurance Trust Fund (Off-Budget):									
Benefit Payments	77,926	.....	77,926	306,885	.....	306,885	287,992	.....	287,992
Administrative Expenses	419	.....	419	1,311	.....	1,311	1,343	.....	1,343
<b>Total--Federal Old-Age and Survivors Insurance Trust Fund (Off-Budget)</b>	<b>78,344</b>	<b>.....</b>	<b>78,344</b>	<b>308,196</b>	<b>.....</b>	<b>308,196</b>	<b>289,336</b>	<b>.....</b>	<b>289,336</b>
Federal Disability Insurance Trust Fund (Off-Budget):									
Benefit Payments	12,148	.....	12,148	47,778	.....	47,778	47,645	.....	47,645
Administrative Expenses	255	.....	255	942	.....	942	873	.....	873
<b>Total--Federal Disability Insurance Trust Fund (Off-Budget)</b>	<b>12,402</b>	<b>.....</b>	<b>12,402</b>	<b>48,720</b>	<b>.....</b>	<b>48,720</b>	<b>48,517</b>	<b>.....</b>	<b>48,517</b>
Other	15	.....	15	66	.....	66	51	.....	51
Proprietary Receipts from the Public:									
On-Budget	.....	175	-175	.....	827	-827	.....	816	-816
Off-Budget	.....	2	-2	.....	13	-13	.....	11	-11
Intrabudgetary Transactions:									
Off-Budget <sup>3</sup>	-10,143	.....	-10,143	-19,181	.....	-19,181	-17,843	.....	-17,843
<b>Total--Social Security Administration</b>	<b>95,744</b>	<b>177</b>	<b>95,567</b>	<b>381,463</b>	<b>840</b>	<b>380,623</b>	<b>357,638</b>	<b>827</b>	<b>356,811</b>

**Table 5. Outlays of the U.S. Government, January 2020 and Other Periods - Continued**

[\$ millions]

Classification	This Month			Current Fiscal Year to Date			Prior Fiscal Year to Date		
	Gross Outlays	Applicable Receipts	Outlays	Gross Outlays	Applicable Receipts	Outlays	Gross Outlays	Applicable Receipts	Outlays
<b>Independent Agencies:</b>									
Broadcasting Board of Governors	64	(**)	64	243	(**)	242	213	(**)	213
Bureau of Consumer Financial Protection	46	(**)	46	158	(**)	158	152	(**)	152
Corporation for National and Community Service	91	(**)	91	337	(**)	337	315	1	315
Corporation for Public Broadcasting	.....	.....	.....	449	.....	449	465	.....	465
District of Columbia:									
Courts	24	.....	24	107	.....	107	87	(**)	87
General and Special Payments	66	21	45	215	41	173	197	36	161
Equal Employment Opportunity Commission	28	(**)	28	145	1	145	108	1	108
Export-Import Bank of the United States	15	1	14	35	(**)	35	221	180	40
Federal Communications Commission:									
Universal Service Fund	698	.....	698	2,639	.....	2,639	3,400	.....	3,400
Other	179	2	177	618	11	607	167	8	159
Federal Deposit Insurance Corporation:									
Deposit Insurance Fund	266	.....	266	-232	.....	-232	-2,687	.....	-2,687
FSLIC Resolution Fund	1	2	-1	1	7	-6	(**)	7	-7
Total--Federal Deposit Insurance Corporation	267	2	265	-231	7	-238	-2,686	7	-2,693
Federal Drug Control Programs	22	.....	22	111	.....	111	87	.....	87
Federal Housing Finance Agency	21	.....	21	101	.....	101	90	.....	90
Institute of Museum and Library Services	17	(**)	17	82	(**)	82	79	(**)	79
Intelligence Community Management Account	46	.....	46	174	.....	174	207	.....	207
Legal Services Corporation	128	.....	128	220	.....	220	190	.....	190
National Archives and Records Administration	34	1	33	151	6	145	110	6	104
National Credit Union Administration	167	180	-14	323	893	-570	362	628	-266
National Endowment for the Arts	14	(**)	14	56	(**)	56	42	(**)	42
National Endowment for the Humanities	11	(**)	11	48	(**)	47	38	1	38
National Labor Relations Board	22	(**)	22	94	(**)	94	88	(**)	88
Nuclear Regulatory Commission	81	131	-50	321	320	1	297	302	-5
Postal Service:									
Off-Budget:									
Public Enterprise Funds	16,158	16,854	-696	36,302	36,355	-54	38,038	38,153	-115
Other	208	.....	208	267	.....	267	58	.....	58
Other	57	.....	57	57	.....	57	.....	.....	.....
Railroad Retirement Board:									
Federal Windfall Subsidy	1	.....	1	5	.....	5	6	.....	6
Federal Payments to the Railroad Retirement Accounts	173	.....	173	342	.....	342	399	.....	399
Railroad Unemployment Insurance Trust Fund:									
Benefit Payments	14	.....	14	48	.....	48	31	.....	31
Transfer To Administrative Funds	2	.....	2	6	.....	6	8	.....	8
Rail Industry Pension Fund:									
Benefit Payments	467	.....	467	1,856	.....	1,856	1,838	.....	1,838
OASDI Certifications	(**)	.....	(**)	(**)	.....	(**)	(**)	.....	(**)
Transfer to Administrative Funds	8	.....	8	33	.....	33	35	.....	35
Other	1	.....	1	16	.....	16	(**)	.....	(**)
National Railroad Retirement Investment Trust:									
Administrative Expenses	8	.....	8	24	.....	24	24	.....	24
Transfers to the Railroad Retirement Trust Funds from the National Railroad Retirement Investment Trust	426	.....	426	852	.....	852	639	.....	639
Railroad Social Security Equivalent Benefit Account:									
Benefit Payments	630	.....	630	2,507	.....	2,507	2,438	.....	2,438
Transfer To Administrative Funds	3	.....	3	11	.....	11	13	.....	13
Other	-14	.....	-14	-17	.....	-17	-23	.....	-23
Proprietary Receipts from the Public	.....	617	-617	.....	1,777	-1,777	.....	-1,979	1,979
Intrabudgetary Transactions:									
Other	-600	.....	-600	-1,195	.....	-1,195	-1,039	.....	-1,039
Total--Railroad Retirement Board	1,118	617	500	4,487	1,777	2,710	4,368	-1,979	6,347
Securities and Exchange Commission	146	(**)	146	615	1	614	561	32	529
Smithsonian Institution	100	.....	100	379	(**)	379	327	(**)	327
Tennessee Valley Authority	4,400	4,580	-180	19,959	20,386	-427	15,455	15,541	-86
Other	193	270	-77	1,010	371	638	1,137	402	735
<b>Total--Independent Agencies</b>	<b>24,419</b>	<b>22,661</b>	<b>1,759</b>	<b>69,469</b>	<b>60,170</b>	<b>9,299</b>	<b>64,175</b>	<b>53,318</b>	<b>10,857</b>

**Undistributed Offsetting Receipts:**

**Table 5. Outlays of the U.S. Government, January 2020 and Other Periods - Continued**

[\$ millions]

Classification	This Month			Current Fiscal Year to Date			Prior Fiscal Year to Date		
	Gross Outlays	Applicable Receipts	Outlays	Gross Outlays	Applicable Receipts	Outlays	Gross Outlays	Applicable Receipts	Outlays
<b>Undistributed Offsetting Receipts: - Continued</b>									
Other Interest	(**)	.....	(**)	(**)	(**)	(**)	.....	(**)	(**)
Employer Share, Employee Retirement:									
Department of Health and Human Services:									
Federal Hospital Insurance Trust Fund:									
Federal Employer Contributions	-330	.....	-330	-1,311	.....	-1,311	-1,310	.....	-1,310
Postal Service Employer Contributions	-53	.....	-53	-226	.....	-226	-212	.....	-212
Department of State:									
Foreign Service Retirement and Disability Fund	-41	.....	-41	-127	.....	-127	-119	.....	-119
Other Defense Civil Programs:									
Military Retirement Fund	-1,801	.....	-1,801	-15,549	.....	-15,549	-14,580	.....	-14,580
Department of Defense Medicare-Eligible Retiree Health Care Fund	.....	.....	.....	-8,050	.....	-8,050	-7,763	.....	-7,763
Office of Personnel Management:									
Civil Service Retirement and Disability Fund	-3,052	.....	-3,052	-12,427	.....	-12,427	-10,127	.....	-10,127
Social Security Administration:									
Federal Old-Age and Survivors Insurance Trust Fund:									
Federal Employer Contributions	-1,383	.....	-1,383	-4,975	.....	-4,975	-4,730	.....	-4,730
Federal Disability Insurance Trust Fund:									
Federal Employer Contributions	-235	.....	-235	-845	.....	-845	-1,033	.....	-1,033
Other	(**)	.....	(**)	(**)	.....	(**)	-2	.....	-2
Total--Employer Share, Employee Retirement	-6,895	.....	-6,895	-43,511	.....	-43,511	-39,875	.....	-39,875
Interest Received by Trust Funds:									
Judicial Branch:									
Judicial Survivors Annuity Fund	(**)	.....	(**)	-4	.....	-4	(**)	.....	(**)
Department of Health and Human Services:									
Federal Hospital Insurance Trust Fund	-19	.....	-19	-3,006	.....	-3,006	-3,414	.....	-3,414
Federal Supplementary Medical Insurance Trust Fund	-31	.....	-31	-1,176	.....	-1,176	-1,269	.....	-1,269
Department of Homeland Security:									
Oil Spill Liability Trust Fund	-10	.....	-10	-44	.....	-44	-50	.....	-50
Other	-6	.....	-6	-17	.....	-17	-11	.....	-11
Department of Labor:									
Unemployment Trust Fund	-4	.....	-4	-1,021	.....	-1,021	-838	.....	-838
Department of State:									
Foreign Service Retirement and Disability Fund	(**)	.....	(**)	-267	.....	-267	-276	.....	-276
Department of Transportation:									
Airport and Airway Trust Fund	-1	.....	-1	-190	.....	-190	-156	.....	-156
Department of Veterans Affairs:									
National Service Life Insurance Fund	(**)	.....	(**)	-44	.....	-44	-55	.....	-55
United States Government Life Insurance Fund	(**)	.....	(**)	(**)	.....	(**)	(**)	.....	(**)
Corps of Engineers	-16	.....	-16	-62	.....	-62	-68	.....	-68
Other Defense Civil Programs:									
Military Retirement Fund	-1,522	.....	-1,522	-1,482	.....	-1,482	-2,453	.....	-2,453
Educational Benefits Fund	-2	.....	-2	2	.....	2	10	.....	10
Armed Forces Retirement Home	(**)	.....	(**)	(**)	.....	(**)	-1	.....	-1
Environmental Protection Agency	-2	.....	-2	-7	.....	-7	-10	.....	-10
Office of Personnel Management:									
Civil Service Retirement and Disability Fund	-1	.....	-1	-12,677	.....	-12,677	-12,916	.....	-12,916
Social Security Administration:									
Federal Old-Age and Survivors Insurance Trust Fund	-47	.....	-47	-38,092	.....	-38,092	-39,778	.....	-39,778
Federal Disability Insurance Trust Fund	-4	.....	-4	-1,405	.....	-1,405	-1,384	.....	-1,384
Independent Agencies:									
Railroad Retirement Board	-6	.....	-6	-32	.....	-32	-15	.....	-15
Other	-10	.....	-10	-13	.....	-13	-7	.....	-7
Other	-34	.....	-34	-239	.....	-239	-351	.....	-351
Total--Interest Received by Trust Funds	-1,716	.....	-1,716	-59,779	.....	-59,779	-63,042	.....	-63,042
Rents and Royalties on the Outer Continental Shelf Lands	.....	480	-480	.....	1,889	-1,889	.....	2,364	-2,364
<b>Total--Undistributed Offsetting Receipts</b>	<b>-8,611</b>	<b>480</b>	<b>-9,091</b>	<b>-103,290</b>	<b>1,889</b>	<b>-105,179</b>	<b>-102,917</b>	<b>2,365</b>	<b>-105,281</b>
<b>Total Outlays</b>	<b>454,477</b>	<b>49,595</b>	<b>404,881</b>	<b>1,742,593</b>	<b>174,609</b>	<b>1,567,985</b>	<b>1,591,191</b>	<b>169,722</b>	<b>1,421,469</b>
<b>Total On-Budget</b>	<b>359,177</b>	<b>32,739</b>	<b>326,438</b>	<b>1,413,607</b>	<b>138,241</b>	<b>1,275,366</b>	<b>1,280,009</b>	<b>131,558</b>	<b>1,148,451</b>
<b>Total Off-Budget</b>	<b>95,299</b>	<b>16,856</b>	<b>78,443</b>	<b>328,987</b>	<b>36,368</b>	<b>292,619</b>	<b>311,182</b>	<b>38,164</b>	<b>273,018</b>
<b>Total Surplus (+) or Deficit (-)</b>			<b>-32,593</b>			<b>-389,185</b>			<b>-310,252</b>
<b>Total On-Budget</b>			<b>-44,892</b>			<b>-397,406</b>			<b>-321,364</b>
<b>Total Off-Budget</b>			<b>+12,299</b>			<b>+8,221</b>			<b>+11,112</b>

**Table 5. Outlays of the U.S. Government, January 2020 and Other Periods - Continued**

[\$ millions]

**MEMORANDUM**

Receipts Offset Against Outlays (In Millions)

	Current Fiscal Year to Date	Comparable Period Prior Fiscal Year
Proprietary Receipts	77,076	79,259
Intrabudgetary Transactions	352,299	335,190
Governmental Receipts	4,548	3,740
Total Receipts Offset Against Outlays	<u>433,924</u>	<u>418,188</u>

1 Outlays increased by \$23 million due to additional reporting for the month of December 2019.

2 Applicable receipts increased by \$10 million due to additional reporting for the month of December 2019.

3 Includes FICA and SECA tax credits, non-contributory military service credits,

special benefits for the aged and credit for the unnegotiated OASI benefit checks.

Note: Details may not add to totals due to rounding.

... No Transactions

(\*\*) Less than absolute value of \$500,000



**Table 6. Means of Financing the Deficit or Disposition of Surplus by the U.S. Government, January 2020 and Other Periods**  
[\$ millions]

Assets and Liabilities Directly Related to Budget Off-Budget Activity	Net Transactions (-) denotes net reduction of either liability or asset accounts			Account Balances Current Fiscal Year		
	This Month	Fiscal Year to Date		Beginning of		Close of This Month
		This Year	Prior Year	This Year	This Month	
<b>Liability Accounts:</b>						
Borrowing from the Public:						
Treasury Securities, Issued Under General Financing Authorities:						
Debt Held by the Public	42,192	403,542	340,072	16,809,091	17,170,442	17,212,634
Intragovernmental Holdings	-19,760	100,869	126,293	5,910,309	6,030,938	6,011,178
Total Treasury Securities Outstanding	22,433	504,411	466,365	22,719,402	23,201,380	23,223,813
Plus Premium on Treasury Securities	-25	46	1,877	32,781	32,852	32,827
Less Discount on Treasury Securities	-209	9,493	4,718	105,621	115,323	115,114
Total Treasury Securities Net of Premium and Discount	22,617	494,964	463,524	22,646,560	23,118,908	23,141,525
Agency Securities, Issued Under Special Financing Authorities (See Schedule B; for Other Agency Borrowing, See Schedule C)						
Total Federal Securities	22,486	494,590	463,499	22,668,015	23,140,119	23,162,605
Deduct:						
Federal Securities Held as Investments of Government Accounts (See Schedule D)						
Less Discount on Federal Securities Held as Investments of Government Accounts	-180	-654	1,409	28,201	27,727	27,547
Net Federal Securities Held as Investments of Government Accounts	-19,411	101,626	123,767	5,865,224	5,986,261	5,966,850
Total Borrowing from the Public	41,898	392,964	339,732	16,802,792	17,153,857	17,195,755
Accrued Interest Payable to the Public	10,528	13,688	8,716	73,285	76,445	86,973
Allocations of Special Drawing Rights	-208	482	192	48,146	48,836	48,628
Uninvested Balances, Deposit Funds	-1,027	246	2,662	26,129	27,401	26,375
Miscellaneous Liability Accounts (Includes Checks Outstanding Etc.)	-1,949	12,405	-1,543	8,483	22,837	20,888
<b>Total Liability Accounts</b>	<b>49,242</b>	<b>419,784</b>	<b>349,760</b>	<b>16,958,835</b>	<b>17,329,377</b>	<b>17,378,619</b>
<b>Asset Accounts (Deduct)</b>						
Cash and Monetary Assets:						
U.S. Treasury Operating Cash:						
Federal Reserve Account <sup>2</sup>	131	21,500	18,885	382,483	403,853	403,983
Balance	131	21,500	18,885	382,483	403,853	403,983
Special Drawing Rights:						
Total Holdings	-216	557	247	49,976	50,749	50,533
SDR Certificates Issued to Federal Reserve Banks	.....	.....	.....	-5,200	-5,200	-5,200
Balance	-216	557	247	44,776	45,549	45,333
Reserve Position on the U.S. Quota in the IMF:						
U.S. Subscription to International Monetary Fund:						
Direct Quota Payments	.....	.....	.....	111,629	111,629	111,629
Maintenance of Value Adjustments	-488	1,132	452	1,517	3,137	2,650
Letter of Credit Issued to IMF	88	341	3,142	-91,228	-90,975	-90,887
Dollar Deposits with the IMF	-13	-24	-9	-304	-315	-328
Receivable/Payable (-) for Interim Maintenance of Value Adjustments	387	-903	-357	1,341	51	438
Balance	-26	547	3,229	22,955	23,527	23,502
Loans to International Monetary Fund	-88	-198	-1,288	2,759	2,649	2,561
Other Cash and Monetary Assets	66	-195	93	26,541	26,281	26,347
Total Cash and Monetary Assets	-133	22,211	21,165	479,515	501,859	501,726
Non-Federal Securities of the National Railroad Retirement Investment Trust						
Net Activity, Guaranteed Loan Financing (See Schedule E)	-183	-474	3,121	32,488	32,197	32,014
Net Activity, Direct Loan Financing (See Schedule E)	16,480	7,627	17,752	1,414,936	1,406,083	1,422,564
Miscellaneous Asset Accounts	200	472	-41	-961	-689	-489
<b>Total Asset Accounts</b>	<b>16,539</b>	<b>30,807</b>	<b>39,494</b>	<b>1,950,036</b>	<b>1,964,305</b>	<b>1,980,843</b>
<b>Excess of Liabilities (+) or Assets (-)</b>	<b>32,704</b>	<b>388,977</b>	<b>310,265</b>	<b>15,008,798</b>	<b>15,365,072</b>	<b>15,397,776</b>
Transactions Not Applied to Current Year's Surplus or Deficit (See Schedule A for Details)						
	-110	207	-13	.....	318	207
<b>Total Budget and Off-Budget Federal Entities (Financing of Deficit (+) or Disposition of Surplus (-))</b>	<b>32,593</b>	<b>389,185</b>	<b>310,252</b>	<b>15,008,798</b>	<b>15,365,390</b>	<b>15,397,983</b>

1 The balance increased by \$13 million due to additional reporting by the Department of the Interior for December 2019.

2 Major sources of information used to determine Treasury's operating cash balance include Federal Reserve Banks, Treasury Regional Finance Centers, Internal Revenue Service Centers, various electronic systems, and information on the

Public Debt. Information is presented on a modified cash basis. Deposits are reflected as received and withdrawals are reflected as processed.

Note: Details may not add to totals due to rounding.

... No Transactions

**Table 6. Schedule A-Analysis of Change in Excess of Liabilities of the U.S. Government, January 2020 and Other Periods**

Classification	[\$ millions]		
	This Month	Fiscal Year to Date	
		This Year	Prior Year
<b>Excess of Liabilities Beginning of Period:</b>			
Based on Composition of Unified Budget in Preceding Period	15,365,072	15,008,728	14,164,924
Adjustments During Current Fiscal Year for Changes in Composition of Unified Budget:			
Revisions by Federal Agencies to the Prior Budget Results	.....	.....	-140,646
Excess of Liabilities Beginning of Period (Current Basis)	15,365,072	15,008,728	14,024,278
<b>Budget Surplus (-) or Deficit:</b>			
Based on Composition of Unified Budget in Prior Fiscal Year	32,593	389,185	310,252
Total Surplus (-) or Deficit (Table 2)	32,593	389,185	310,252
Total-On-Budget (Table 2)	44,892	397,406	321,364
Total-Off-Budget (Table 2)	-12,299	-8,221	-11,112
<b>Transactions Not Applied to Current Year's Surplus or Deficit:</b>			
Premium/Discount on Buyback of U.S. Treasury Securities	.....	(**)	-2
Other	110	-207	15
Total-Transactions Not Applied to Current Year's Surplus or Deficit	110	-207	13
<b>Excess of Liabilities Close of Period</b>	<b>15,397,776</b>	<b>15,397,776</b>	<b>14,334,543</b>

Note: Details may not add to totals due to rounding.  
 ... No Transactions

(\*\*) Less than absolute value of \$500,000

**Table 6. Schedule B-Securities Issued by Federal Agencies Under Special Financing Authorities, January 2020 and Other Periods**

Classification	[\$ millions]					
	This Month	Net Transactions (-) denotes net reduction of liability accounts		Account Balances Current Fiscal Year		
		Fiscal Year to Date		Beginning of		Close of
	This Year	Prior Year	This Year	This Month	This Month	
<b>Agency Securities, Issued Under Special Financing Authorities:</b>						
<b>Obligations Guaranteed by the United States, Issued By:</b>						
Department of Housing and Urban Development:						
Federal Housing Administration	.....	.....	.....	19	19	19
<b>Obligations Not Guaranteed by the United States, Issued By:</b>						
Legislative Branch:						
Architect of the Capitol	1	2	2	69	71	71
Independent Agencies:						
Federal Communications Commission	.....	.....	.....	(**)	(**)	(**)
National Archives and Records Administration	.....	.....	.....	(**)	(**)	(**)
Tennessee Valley Authority	-131	-376	-27	21,367	21,122	20,991
<b>Total Agency Securities</b>	<b>-130</b>	<b>-374</b>	<b>-24</b>	<b>21,455</b>	<b>21,211</b>	<b>21,080</b>

Note: Details may not add to totals due to rounding.  
 ... No Transactions

(\*\*) Less than absolute value of \$500,000

**Table 6. Schedule C (Memorandum)-Federal Agency Borrowing Financed Through the Issue of Treasury Securities, January 2020 and Other Periods**

Classification	[\$ millions]					
	Transactions			Account Balances Current Fiscal Year		
	This Month	Fiscal Year to Date		Beginning of		Close of This Month
This Year		Prior Year	This Year	This Month		
<b>Borrowing from the US Treasury:</b>						
Department of Agriculture:						
Farm Service Agency:						
Commodity Credit Corporation	-5,098	-7,163	12,887	24,862	22,797	17,699
Agricultural Credit Insurance Fund	241	870	280	13,084	13,713	13,954
Farm Storage Facility Loans	(**)	120	125	1,067	1,187	1,187
Apple Loans Fund	.....	.....	.....	(**)	(**)	(**)
Emergency Boll Weevil Loan Fund	.....	-1	-1	4	3	3
Rural Housing Service:						
Rural Housing Insurance	95	375	226	18,783	19,062	19,157
Rural Community Facility Loans Fund	131	441	319	10,368	10,677	10,808
Multifamily Housing Revitalization Loan Account	10	20	18	454	464	474
Rural Business - Cooperative Service:						
Rural Business and Industry Loans	.....	.....	.....	88	88	88
Rural Development Loan Fund	1	4	2	304	307	308
Rural Economic Development Loan Fund	4	9	5	221	227	230
Renewable Energy Guaranteed Loan Account	.....	.....	.....	1	1	1
Rural Microenterprise Investment Loans	(**)	1	(**)	44	44	44
Biorefinery Assistance Loan Account	.....	.....	.....	2	2	2
Rural Utilities Service:						
Rural Water and Waste Disposal Fund	50	389	172	13,270	13,609	13,660
Rural Electrification and Telecommunications Fund	6	79	157	6,865	6,938	6,944
Rural Telephone Bank	.....	.....	.....	118	118	118
Distance Learning and Telemedicine Program	2	3	3	788	789	791
Foreign Agricultural Service	.....	.....	.....	432	432	432
Department of Commerce:						
National Oceanic and Atmospheric Administration:						
Fisheries Finance	.....	10	2	395	405	405
Department of Defense--Military Programs:						
Family Housing Improvement Loans	.....	.....	25	1,714	1,714	1,714
Department of Education:						
College Housing and Academic Facilities Loans	.....	(**)	.....	16	16	16
Federal Direct Student Loans	17,488	63,676	72,843	1,211,865	1,258,052	1,275,541
Teach Grant Loans	14	37	30	651	675	688
Temporary Student Loan Purchase Authority	.....	-395	-872	39,713	39,317	39,317
Federal Family Education Loans	.....	.....	.....	35,265	35,265	35,265
Department of Energy:						
Bonneville Power Administration Fund	.....	250	-157	5,280	5,530	5,530
Western Area Power Administration - Recovery Act	.....	.....	.....	76	76	76
Title 17 Innovative Technology Loans	.....	33	3	748	782	782
Department of Health and Human Services:						
Consumer Operated and Oriented Plan	.....	.....	.....	149	149	149
Consumer Operated and Oriented Plan Program Contingency Fund	.....	.....	.....	58	58	58
Department of Homeland Security:						
National Flood Insurance Fund	.....	.....	.....	20,525	20,525	20,525
Disaster Assistance Loan Fund	(**)	1	1	71	72	72
Department of Housing and Urban Development:						
Public and Indian Housing Programs:						
Low-Rent Public Housing - Loans and Other Expenses	.....	.....	.....	12	12	12
Native Hawaiian Housing Loans	.....	1	(**)	2	3	3
Housing Programs:						
Federal Housing Administration	.....	.....	25	30,386	30,386	30,386
Green Retrofit Program for Multifamily Housing-Recovery Act	.....	.....	.....	10	10	10
Department of the Interior:						
Bureau of Indian Affairs and Bureau of Indian Education	.....	.....	.....	5	5	5
Bureau of Reclamation Loan Fund	.....	.....	.....	29	29	29
Assistance to American Samoa Loan Fund	.....	(**)	.....	8	8	8
Department of Labor:						
Black Lung Disability Trust Fund	.....	110	.....	4,419	4,529	4,529
Department of State:						
Repatriation Loans	1	2	(**)	3	4	5

**Table 6. Schedule C (Memorandum)-Federal Agency Borrowing Financed Through the Issue of Treasury Securities, January 2020 and Other Periods - Continued**

Classification	[ \$ millions ]					
	Transactions			Account Balances Current Fiscal Year		
	This Month	Fiscal Year to Date		Beginning of		Close of This Month
This Year		Prior Year	This Year	This Month		
<b>Borrowing from the US Treasury: - Continued</b>						
Department of Transportation:						
Federal Highway Administration:						
Transportation Infrastructure Finance and Innovation Fund	165	696	695	19,445	19,976	20,141
Federal Railroad Administration:						
Railroad Rehabilitation and Improvement Loan Fund	(**)	(**)	5	1,187	1,187	1,187
Other	.....	.....	.....	(**)	(**)	(**)
Maritime Administration:						
Maritime Guaranteed Loan (Title XI) Fund	.....	.....	.....	125	125	125
Department of the Treasury:						
Departmental Offices:						
Community Development Financial Institutions Fund	(**)	1	4	96	97	97
Temporary Credit and Liquidity Program	.....	.....	.....	3,709	3,709	3,709
Troubled Asset Relief Program	.....	.....	.....	35	35	35
Small Business Lending Financing Fund	.....	.....	.....	153	153	153
Federal Financing Bank Revolving Fund	141	1,449	1,299	63,751	65,060	65,200
Department of Veterans Affairs:						
Veterans Housing Benefit Program Fund	.....	50	181	492	542	542
Native American Veteran Housing Fund	.....	4	5	73	77	77
Vocational Rehabilitation Loan Fund	.....	2	2	1	3	3
Corps of Engineers:						
Washington Aqueduct	.....	(**)	(**)	(**)	(**)	(**)
Environmental Protection Agency:						
Water Infrastructure Finance and Innovation Loan Program	.....	164	.....	(**)	164	164
International Assistance Programs:						
International Security Assistance:						
Foreign Military Loan Program	.....	.....	.....	3,066	3,066	3,066
Military Debt Reduction	.....	.....	.....	48	48	48
Agency for International Development:						
Development Credit Authority Loan Fund	.....	.....	.....	8	8	8
Overseas Private Investment Corporation	.....	239	218	3,829	4,068	4,068
United States International Development Finance Corporation	74	74	.....	.....	.....	74
Small Business Administration:						
Business Loan Fund	.....	-1	2	2,220	2,219	2,219
Disaster Loan Fund	.....	-475	1,389	9,590	9,115	9,115
Independent Agencies:						
Export-Import Bank of the United States	.....	.....	37	16,946	16,946	16,946
Presidio Trust	.....	.....	.....	38	38	38
Railroad Retirement Board:						
Social Security Equivalent Benefit Account	391	1,520	1,457	3,934	5,062	5,454
Smithsonian Institution:						
John F. Kennedy Center Parking Facilities	.....	.....	.....	20	20	20
<b>Total Borrowing from the US Treasury</b>	<b>13,717</b>	<b>62,595</b>	<b>91,389</b>	<b>1,570,919</b>	<b>1,619,796</b>	<b>1,633,513</b>
<b>Borrowing from the Federal Financing Bank:</b>						
Department of Agriculture:						
Rural Utilities Service:						
Rural Electrification and Telecommunications Fund	139	89	677	46,289	46,238	46,377
Department of Education:						
Historically Black College and University Capital Financing Fund	-1	12	-15	1,479	1,491	1,491
Department of Energy:						
Advanced Technology Vehicles Manufacturing Loans	.....	-148	-148	1,618	1,470	1,470
Title 17 Innovative Technology Loans	-19	836	25	12,804	13,658	13,639
Department of Health and Human Services:						
Health Maintenance Organization Loan and Loan Guarantee Fund	.....	.....	.....	(**)	(**)	(**)
Department of Housing and Urban Development:						
Housing Programs:						
Federal Housing Administration	-2	260	103	1,969	2,231	2,229
Department of the Treasury:						
Departmental Offices:						
Community Development Financial Institutions Fund	7	21	126	1,017	1,031	1,038
Department of Veterans Affairs:						
Guaranteed Transitional Housing Loans for Homeless Veterans	(**)	(**)	(**)	4	4	4
Independent Agencies:						
National Credit Union Administration	.....	.....	1	.....	.....	.....
Postal Service	.....	.....	.....	11,000	11,000	11,000
<b>Total Borrowing from the Federal Financing Bank</b>	<b>124</b>	<b>1,069</b>	<b>769</b>	<b>76,180</b>	<b>77,125</b>	<b>77,249</b>

Note: Details may not add to totals due to rounding.

Note: This table includes lending by the Federal Financing Bank accomplished by the purchase of agency financial assets, by the acquisition of agency debt securities, and by direct loans on behalf of an agency. The Federal Financing Bank borrows from

Treasury and issues its own securities and in turn may loan these funds to agencies in lieu of agencies borrowing directly through Treasury or issuing their own securities.

... No Transactions

(\*\*) Less than absolute value of \$500,000

**Table 6. Schedule D-Investments of Federal Government Accounts in Federal Securities, January 2020 and Other Periods**  
 [\$ millions]

Classification	Net Purchases or Sales (-)			Securities Held as Investments Current Fiscal Year		
	This Month	Fiscal Year to Date		Beginning of		Close of This Month
		This Year	Prior Year	This Year	This Month	
<b>Federal Funds:</b>						
Department of Agriculture	.....	(**)	.....	226	226	226
Department of Commerce	2	2	.....	.....	.....	2
Department of Defense--Military Programs:						
Defense Cooperation Account	.....	.....	(**)	8	8	8
Department of Energy	3	110	-70	55,848	55,955	55,958
Department of Health and Human Services	.....	11,006	10,236	.....	11,006	11,006
Department of Homeland Security	267	208	70	1,525	1,467	1,734
Department of Housing and Urban Development:						
Housing Programs:						
Federal Housing Administration Fund	588	2,419	-246	50,601	52,431	53,019
Government National Mortgage Association:						
Guarantees of Mortgage-Backed Securities	21	87	-322	15,784	15,850	15,871
Department of the Interior	67	-63	-1,028	9,921	9,791	9,858
Department of Justice	1	5	-1,044	1,040	1,044	1,045
Department of Labor	-468	3,580	3,107	37,020	41,068	40,600
Department of State:						
Foreign Service Retirement and Disability Fund	(**)	3	2	23	26	26
Other	.....	(**)	(**)	15	15	15
Department of Transportation	98	-1	13	2,343	2,244	2,342
Department of the Treasury	35	92	102	23,842	23,899	23,933
Department of Veterans Affairs:						
Veterans Reopened Insurance Fund	-2	-5	-4	84	80	79
Servicemen'S Group Life Insurance Fund	.....	303	(**)	301	604	604
Other Defense Civil Programs:						
Uniformed Services Retiree Health Care Fund	-889	16,073	12,383	254,176	271,139	270,249
Office of Personnel Management:						
Postal Service Contributions	-324	-677	-605	44,611	44,258	43,933
Independent Agencies:						
Federal Deposit Insurance Corporation:						
Deposit Insurance Fund	-287	127	2,871	104,015	104,429	104,142
FSLIC Resolution Fund	1	7	7	872	878	880
Federal Housing Finance Agency	-16	56	47	71	144	127
National Credit Union Administration	15	570	275	15,736	16,291	16,306
Postal Service	364	-204	115	9,341	8,774	9,137
Tennessee Valley Authority	(**)	(**)	(**)	25	25	25
Other						
Treasury Securities	198	-230	249	11,501	11,073	11,271
Other	138	294	-268	8,581	8,738	8,875
Total Treasury Securities	-189	33,762	25,888	647,510	681,461	681,273
<b>Total Federal Funds</b>	<b>-189</b>	<b>33,762</b>	<b>25,888</b>	<b>647,510</b>	<b>681,461</b>	<b>681,273</b>
<b>Trust Funds:</b>						
Legislative Branch:						
Library of Congress	(**)	(**)	-1	23	23	23
United States Tax Court	.....	(**)	(**)	13	13	13
Other	-1	4	3	29	34	33
Judicial Branch:						
Judicial Retirement Funds	175	202	(**)	1,304	1,330	1,506
Department of Agriculture	.....	.....	.....	6	6	6
Department of Commerce	1,523	23	77	7,561	6,061	7,584
Department of Defense--Military Programs:						
Voluntary Separation Incentive Fund	-3	1	-3	89	93	90
Other	-19	23	326	1,735	1,778	1,758
Department of Health and Human Services:						
Federal Supplementary Medical Insurance Trust Fund	-19,016	-15,663	9,265	104,716	108,069	89,053
Other	-5,643	-10,230	2,773	202,509	197,922	192,280
Department of Homeland Security	-59	-39	303	8,853	8,873	8,814
Department of the Interior	-8	-5	-12	36	39	31
Department of Labor:						
Unemployment Trust Fund	-2,089	-2,624	-2,537	84,361	83,826	81,737
Other	-7	-25	-35	64	46	39
Department of State:						
Foreign Service Retirement and Disability Fund	-39	363	113	19,318	19,720	19,681

**Table 6. Schedule D-Investments of Federal Government Accounts in Federal Securities, January 2020 and Other Periods - Continued**  
 [\$ millions]

Classification	Net Purchases or Sales (-)			Securities Held as Investments Current Fiscal Year		
	This Month	Fiscal Year to Date		Beginning of		Close of This Month
		This Year	Prior Year	This Year	This Month	
<b>Trust Funds - Continued</b>						
Other	(**)	-2	-3	46	45	45
Department of Transportation:						
Airport and Airway Trust Fund	19	356	605	15,018	15,355	15,374
Highway Trust Fund	-137	-3,104	-3,405	28,192	25,225	25,088
Department of the Treasury	-106	-381	-350	3,578	3,303	3,197
Department of Veterans Affairs:						
General Post Fund, National Homes	-12	-12	23	119	119	107
National Service Life Insurance	-59	-154	-165	2,456	2,362	2,302
United States Government Life Insurance Fund	(**)	(**)	(**)	2	2	2
Veterans Special Life Insurance Fund	-18	-37	-26	1,357	1,338	1,320
Corps of Engineers	123	555	791	9,454	9,887	10,010
Other Defense Civil Programs:						
Military Retirement Fund	-1,922	92,780	85,707	827,414	922,115	920,193
Other	6	-31	-51	1,158	1,120	1,126
Environmental Protection Agency	-17	90	-77	6,024	6,131	6,114
National Aeronautics and Space Administration	.....	(**)	(**)	16	16	16
Office of Personnel Management:						
Civil Service Retirement and Disability Fund						
Treasury Securities	-4,335	-3,409	-4,755	939,703	940,629	936,294
Employees Life Insurance Fund	59	259	226	48,199	48,399	48,457
Employees and Retired Employees Health Benefits Fund	-234	-565	-176	27,802	27,472	27,237
Social Security Administration:						
Federal Old-Age and Survivors Insurance Trust Fund	10,361	10,320	5,261	2,804,396	2,804,355	2,814,717
Federal Disability Insurance Trust Fund	1,428	-1,954	5,634	96,520	93,138	94,566
Independent Agencies:						
Harry S Truman Scholarship Foundation	-5	-5	-5	51	51	46
Japan-United States Friendship Commission	.....	.....	-1	35	35	35
Railroad Retirement Board						
Treasury Securities	372	12	-66	2,606	2,246	2,618
Other						
Treasury Securities	258	462	-151	1,149	1,353	1,611
Total Treasury Securities	-19,403	67,210	99,288	5,245,914	5,332,527	5,313,124
<b>Total Trust Funds</b>	<b>-19,403</b>	<b>67,210</b>	<b>99,288</b>	<b>5,245,914</b>	<b>5,332,527</b>	<b>5,313,124</b>
<b>Grand Total</b>	<b>-19,592</b>	<b>100,973</b>	<b>125,176</b>	<b>5,893,424</b>	<b>6,013,988</b>	<b>5,994,397</b>

Note: Details may not add to totals due to rounding.

Note: Investments are in Treasury securities unless otherwise noted.

... No Transactions

(\*\*) Less than absolute value of \$500,000

**Table 6. Schedule E-Net Activity, Guaranteed and Direct Loan Financing, January 2020 and Other Periods**

[\$ millions]

Classification	Net Transactions (-) denotes net reduction of asset accounts			Account Balances Current Fiscal Year		
	This Month	Fiscal Year to Date		Beginning of		Close of This Month
		This Year	Prior Year	This Year	This Month	
<b>Guaranteed Loan Financing Activity:</b>						
Department of Agriculture:						
Farm Service Agency:						
Commodity Credit Corporation Export Fund	-1	-32	-19	183	152	151
Agricultural Credit Insurance Fund	(**)	3	1	-207	-204	-204
Natural Resources Conservation Service:						
Agricultural Resource Conservation Demonstration Program	.....	.....	.....	(**)	(**)	(**)
Rural Housing Service:						
Rural Community Facility Loans	2	2	-1	-42	-43	-40
Rural Housing Insurance Fund	3	-18	-27	851	829	832
Rural Business - Cooperative Service:						
Rural Business and Industry Loans	-10	-16	-6	-157	-164	-173
Renewable Energy Guaranteed Loan Account	(**)	-1	-4	-50	-51	-51
Biorefinery Assistance Loan Account	.....	.....	-3	-47	-47	-47
Rural Utilities Service:						
Rural Water and Waste Disposal Fund	(**)	(**)	(**)	-25	-25	-25
Department of Commerce:						
General Administration:						
Emergency Oil, Gas, and Steel Account	.....	.....	.....	5	5	5
Department of Defense--Military Programs						
.....						
Department of Education:						
Office of Student Financial Assistance:						
Federal Family Education Loans	-231	-583	-355	23,825	23,472	23,241
Department of Energy:						
Title 17 Innovative Technology Loans	-2	-4	.....	-126	-128	-130
Department of Health and Human Services:						
Health Resources and Services Administration:						
Health Center Loans	.....	.....	.....	-1	-1	-1
Health Education Assistance Loans	.....	.....	.....	-70	-70	-70
Department of Housing and Urban Development:						
Public and Indian Housing Programs:						
Indian Housing Loans	-1	-1	-3	-135	-136	-136
Native Hawaiian Housing Loans	(**)	(**)	(**)	-1	-1	-1
Community Planning and Development:						
Community Development Loans	(**)	(**)	(**)	-14	-14	-14
Housing Programs:						
FHA-Mutual Mortgage Insurance Loans	223	746	2,721	19,700	20,222	20,446
FHA-General and Special Risk Fund	134	537	732	-2,389	-1,986	-1,852
Home Ownership Preservation Entity Fund	(**)	(**)	(**)	-17	-17	-17
Government National Mortgage Association:						
Guarantees of Mortgage-Backed Securities	-150	-596	-592	6,253	5,806	5,656
Department of the Interior:						
Bureau of Indian Affairs and Bureau of Indian Education	(**)	-2	-2	-46	-48	-48
Department of Transportation:						
Office of the Secretary:						
Minority Business Resource Center Fund	.....	.....	.....	(**)	(**)	(**)
Federal Highway Administration:						
Transportation Infrastructure Finance and Innovation Fund	.....	.....	.....	(**)	(**)	(**)
Maritime Administration:						
Maritime Guaranteed Loan (Title XI) Fund	(**)	1	-28	-51	-49	-49
Department of the Treasury:						
Departmental Offices:						
Air Transportation Stabilization Fund	.....	.....	.....	(**)	(**)	(**)
Troubled Assets Insurance Financing Fund	.....	.....	.....	(**)	(**)	(**)
Troubled Asset Relief Program	(**)	(**)	(**)	-2	-2	-2
Department of Veterans Affairs:						
Veterans Benefits Administration:						
Veterans Housing Benefit Program Fund	-121	-348	-237	-9,169	-9,396	-9,516
International Assistance Programs:						
Agency for International Development:						

**Table 6. Schedule E-Net Activity, Guaranteed and Direct Loan Financing, January 2020 and Other Periods - Continued**  
 [\$ millions]

Classification	Net Transactions (-) denotes net reduction of asset accounts			Account Balances Current Fiscal Year		
	This Month	Fiscal Year to Date		Beginning of		Close of This Month
		This Year	Prior Year	This Year	This Month	
<b>Guaranteed Loan Financing Activity: - Continued</b>						
Ukraine Export Credit Insurance Fund	.....	.....	.....	-1,098	-1,098	-1,098
Loan Guarantees to Israel	.....	.....	.....	-1,178	-1,178	-1,178
Urban and Environmental Credit Guaranteed Loans	1	2	2	-39	-38	-38
Microenterprise and Small Enterprise Development Development Credit Authority Loan Fund	.....	.....	(**)	(**)	(**)	(**)
Tunisia Loan Fund	1	3	-2	-101	-99	-99
Overseas Private Investment Corporation	.....	.....	.....	-1,325	-1,325	-1,325
United States International Development Finance Corporation	.....	23	23	255	278	278
Small Business Administration:	1	1	.....	.....	.....	1
Business Loan Fund	-31	-179	-277	-1,662	-1,809	-1,840
Independent Agencies:						
Export-Import Bank of the United States	-2	-11	1,198	-568	-577	-579
<b>Net Activity, Guaranteed Loan Financing</b>	<b>-183</b>	<b>-474</b>	<b>3,121</b>	<b>32,488</b>	<b>32,197</b>	<b>32,014</b>
<b>Direct Loan Financing Activity:</b>						
Department of Agriculture:						
Farm Service Agency:						
Agricultural Credit Insurance Fund	-22	-1	-266	11,550	11,571	11,549
Farm Storage Facility Loans	18	34	33	819	835	853
Apple Loans Fund	.....	.....	.....	(**)	(**)	(**)
Emergency Boll Weevil Loan Fund	.....	-2	-1	3	2	2
Rural Housing Service:						
Rural Community Facility Loans Fund	46	206	333	9,512	9,672	9,718
Rural Housing Insurance Fund	-52	-182	-188	15,735	15,605	15,553
Multifamily Housing Revitalization Loan Account	5	10	4	416	421	426
Rural Business - Cooperative Service:						
Rural Business and Industry Loan Fund	(**)	(**)	(**)	(**)	-1	-1
Rural Development Loan Fund	-1	-9	-9	280	272	271
Rural Economic Development Loan Fund	(**)	-3	5	185	182	182
Rural Microenterprise Investment Loans	(**)	-1	-1	40	39	39
Rural Utilities Service:						
Rural Water and Waste Disposal Loans	-68	-70	-21	11,857	11,855	11,787
Rural Electrification and Telecommunications Fund	101	-188	756	48,284	47,995	48,096
Rural Telephone Bank	-3	-8	-7	92	87	84
Distance Learning and Telemedicine Program	-5	-25	-28	560	539	535
Rural Development Insurance Fund	.....	.....	.....	1,065	1,065	1,065
Foreign Agricultural Service:						
P.L. 480 Direct Loan Fund	-3	-49	-50	407	361	357
International Debt Reduction	.....	-4	-4	-62	-66	-66
Department of Commerce:						
National Oceanic and Atmospheric Administration:						
Fisheries Finance	-3	-4	-10	395	394	391
Department of Defense--Military Programs	-8	-29	-3	1,714	1,693	1,684
Department of Education:						
Office of Postsecondary Education:						
College Housing and Academic Facilities Loans	(**)	(**)	(**)	3	3	3
Historically Black College and University Capital Financing Fund	-1	11	7	1,320	1,332	1,331
Office of Student Financial Assistance:						
Federal Direct Student Loans	17,435	14,424	21,374	1,177,207	1,174,196	1,191,631
Teach Grant Loans	9	7	1	616	614	623
Temporary Student Loan Purchase Authority	-473	-1,931	-2,232	58,858	57,400	56,927
Department of Energy:						
Advanced Technology Vehicles Manufacturing Loans	.....	-148	-148	1,548	1,400	1,400
Title 17 Innovative Technology Loans	-19	870	26	12,737	13,626	13,607
Department of Health and Human Services:						
Consumer Operated and Oriented Plan	-7	-8	-4	126	126	119
Consumer Operated and Oriented Plan Program Contingency Fund	.....	(**)	.....	55	55	55
Department of Homeland Security:						
Disaster Assistance Loan Fund	(**)	-4	1	34	31	31
Department of Housing and Urban Development:						



**Table 6. Schedule E-Net Activity, Guaranteed and Direct Loan Financing, January 2020 and Other Periods - Continued**

[\$ millions]

Classification	Net Transactions (-) denotes net reduction of asset accounts			Account Balances Current Fiscal Year		
	This Month	Fiscal Year to Date		Beginning of		Close of This Month
		This Year	Prior Year	This Year	This Month	
<b>Direct Loan Financing Activity: - Continued</b>						
Housing Programs:						
Emergency Homeowners' Relief Fund	(**)	(**)	(**)	-1	-1	-1
FHA-Mutual Mortgage Insurance Loans	.....	.....	.....	(**)	(**)	(**)
FHA-General and Special Risk Fund	-2	283	118	2,077	2,362	2,359
Green Retrofit Program for Multifamily Housing Fund	.....	-3	(**)	8	5	5
Department of the Interior:						
Bureau of Reclamation	.....	.....	.....	30	30	30
Bureau of Indian Affairs and Bureau of Indian Education	(**)	(**)	(**)	2	2	2
Assistance to American Samoa Loan Fund	.....	.....	.....	8	8	8
Department of State:						
Administration of Foreign Affairs:						
Repatriation Loans	(**)	(**)	(**)	1	1	1
Department of Transportation:						
Federal Highway Administration:						
Transportation Infrastructure Finance and Innovation Fund	128	-3,158	154	19,332	16,046	16,174
Tiger Tifia Loan Fund	-1	-1	-1	58	58	58
Federal Railroad Administration:						
Railroad Rehabilitation and Improvement Loan Fund	-4	-36	-7	1,070	1,039	1,035
Department of the Treasury:						
Departmental Offices:						
Community Development Financial Institutions Fund	7	18	126	1,110	1,121	1,128
GSE Mortgage-Backed Securities Purchase Program	.....	.....	.....	4,613	4,613	4,613
Temporary Credit and Liquidity Program	-292	-701	-223	3,644	3,236	2,944
Troubled Asset Relief Program	(**)	-1	-15	-43	-44	-44
Small Business Lending Program	-1	-3	-8	53	51	50
Bureau of the Fiscal Service	.....	.....	.....	(**)	(**)	(**)
Department of Veterans Affairs:						
Veterans Benefits Administration:						
Veterans Housing Benefit Program Fund	-1	1	-14	389	391	390
Native American Veteran Housing Fund	(**)	(**)	(**)	68	68	68
Transitional Housing Loans	(**)	(**)	(**)	(**)	(**)	(**)
Vocational Rehabilitation Loan Fund	(**)	(**)	(**)	(**)	(**)	(**)
Environmental Protection Agency:						
Water Infrastructure Finance and Innovation Loan Program	-1	163	.....	(**)	164	163
International Assistance Programs:						
International Security Assistance:						
Foreign Military Loan Program	-96	-96	437	2,432	2,432	2,336
Military Debt Reduction	.....	.....	.....	36	36	36
Agency for International Development:						
International Debt Reduction	(**)	-26	-26	-146	-172	-172
Overseas Private Investment Corporation	(**)	42	-16	2,860	2,902	2,902
International Monetary Programs	.....	.....	.....	-278	-278	-278
United States International Development Finance Corporation	-93	-93	.....	.....	.....	-93
Small Business Administration:						
Business Loan Fund	2	(**)	-5	172	171	173
Disaster Loan Fund	-63	-216	376	8,252	8,099	8,036
Independent Agencies:						
Export-Import Bank of the United States	-50	-1,440	-2,712	13,831	12,441	12,391
Federal Communications Commission:						
Spectrum Auction Loan Fund	.....	.....	(**)	(**)	(**)	(**)
<b>Net Activity, Direct Loan Financing</b>	<b>16,480</b>	<b>7,627</b>	<b>17,752</b>	<b>1,414,936</b>	<b>1,406,083</b>	<b>1,422,564</b>

Note: Details may not add to totals due to rounding.

Note: Federal credit programs provide benefits to the public in the form of direct loans and loan guarantees. This table reflects cash transactions and balances of the nonbudgetary financing fund accounts that result from the disbursement of loans, collection of fees, repayment of principal, sale of collateral, interest, and subsidy received from the credit program accounts at

net present value in accordance with the Credit Reform Act of 1990. Unreimbursed costs such as administrative expenses and subsidy payments are reported on a cash basis and included within each program's budgetary totals in Table 5.

... No Transactions

(\*\*) Less than absolute value of \$500,000

This Page Intentionally Left Blank

**Table 7. Receipts and Outlays of the U.S. Government by Month, Fiscal Year 2020**

[\$ millions]

Classification	Oct.	Nov.	Dec.	Jan.	Feb.	March	April	May	June	July	Aug.	Sept.	Fiscal Year to Date	Comparable Period Prior F.Y.
<b>Receipts:</b>														
Individual Income Taxes	126,389	105,764	152,706	216,660									601,518	569,931
Corporation Income Taxes	6,571	532	58,311	10,492									75,905	59,863
Social Insurance and Retirement Receipts:														
Employment and General Retirement	86,671	93,654	102,399	117,604									400,328	378,776
Unemployment Insurance	2,757	2,596	248	3,019									8,620	8,922
Other Retirement	389	486	449	422									1,746	1,483
Excise Taxes	6,037	7,513	7,017	6,308									26,875	36,204
Estate and Gift Taxes	1,691	1,239	1,698	2,361									6,988	6,126
Customs Duties	7,757	6,940	6,449	6,918									28,064	24,455
Miscellaneous Receipts	7,260	6,461	6,529	8,506									28,756	25,457
<b>Total--Receipts This Year</b>	<b>245,521</b>	<b>225,185</b>	<b>335,805</b>	<b>372,288</b>									<b>1,178,800</b>	.....
<b>(On-Budget)</b>	<b>181,095</b>	<b>155,648</b>	<b>259,671</b>	<b>281,546</b>									<b>877,960</b>	.....
<b>(Off-Budget)</b>	<b>64,426</b>	<b>69,537</b>	<b>76,135</b>	<b>90,742</b>									<b>300,840</b>	.....
<i>Total--Receipts Prior Year</i>	<i>252,692</i>	<i>205,961</i>	<i>312,584</i>	<i>339,980</i>									.....	1,111,217
<i>(On-Budget)</i>	<i>190,915</i>	<i>139,336</i>	<i>242,999</i>	<i>253,837</i>									.....	827,087
<i>(Off-Budget)</i>	<i>61,777</i>	<i>66,625</i>	<i>69,585</i>	<i>86,143</i>									.....	284,130
<b>Outlays:</b>														
Legislative Branch	504	303	586	460									1,854	1,697
Judicial Branch	713	776	677	689									2,856	2,590
Department of Agriculture:														
Commodity Credit Corporation	5,774	6,662	3,145	845									16,426	16,053
Foreign Agricultural Service	297	147	154	170									770	555
Other	13,022	11,759	11,763	10,210									46,754	47,174
Department of Commerce	963	2,359	1,291	1,012									5,625	4,212
Department of Defense--Military Programs:														
Military Personnel	28,921	14,024	12,271	11,838									67,054	60,071
Operation and Maintenance	21,805	21,315	23,294	23,443									89,857	85,159
International Reconstruction and Other Assistance														
Procurement	8,404	14,858	13,029	8,838									45,129	38,501
Research, Development, Test, and Evaluation	7,690	7,430	9,703	5,952									30,774	28,253
Military Construction	862	583	668	521									2,634	2,466
Family Housing	84	67	97	79									327	350
Revolving and Management Funds	258	1,241	981	-92									2,386	4,263
Other	209	556	-1,000	-224									-459	-308
<b>Total Department of Defense--Military Programs</b>	<b>68,233</b>	<b>60,073</b>	<b>59,042</b>	<b>50,354</b>									<b>237,702</b>	<b>218,762</b>
Department of Education	8,094	4,772	4,785	9,839									27,490	26,691
Department of Energy	3,109	2,639	2,226	2,830									10,804	9,188
Department of Health and Human Services:														
National Institutes of Health	3,179	3,110	3,002	2,932									12,223	11,889
Centers for Medicare and Medicaid Services:														
Grants to States for Medicaid	34,777	33,243	32,932	34,760									135,711	128,813
Federal Hospital Insurance Trust Fund	27,210	35,953	18,135	39,218									120,516	103,461
Federal Supplementary Medical Insurance Trust Fund	38,895	57,493	19,585	59,190									175,163	142,065
Other	34,196	30,045	30,051	38,169									132,461	124,989
Administration for Children and Families	4,848	5,527	4,594	4,908									19,877	18,233
Other	-37,714	-33,291	-36,428	-44,759									-152,193	-144,339
Department of Homeland Security	4,884	5,053	5,450	4,563									19,950	19,770
Department of Housing and Urban Development	3,836	3,798	4,056	3,667									15,357	15,197
Department of the Interior	1,251	900	1,467	1,254									4,872	4,396
Department of Justice	3,135	2,778	3,024	3,671									12,608	11,299
Department of Labor:														
Unemployment Trust Fund	2,285	2,079	2,941	3,407									10,712	10,916
Other	-5,653	1,278	2,206	1,475									-694	-768
Department of State	2,251	3,377	2,733	2,411									10,773	9,973
Department of Transportation:														
Highway Trust Fund	4,742	3,683	3,153	2,528									14,106	13,486
Other	2,728	2,810	3,380	2,915									11,833	10,111
Department of the Treasury:														
Interest on Treasury Debt Securities (Gross)	30,319	35,643	94,225	33,903									194,091	192,032

**Table 7. Receipts and Outlays of the U.S. Government by Month, Fiscal Year 2020 - Continued**

[\$ millions]

Classification	Oct.	Nov.	Dec.	Jan.	Feb.	March	April	May	June	July	Aug.	Sept.	Fiscal Year to Date	Comparable Period Prior F.Y.
<b>Outlays: - Continued</b>														
Other	8,903	6,937	9,272	6,375									31,486	18,375
<b>Department of Veterans Affairs:</b>														
Compensation and Pensions	8,604	16,622	8,841	8,955									43,022	31,960
National Service Life	54	49	37	63									204	220
Other	8,937	10,481	8,136	8,964									36,518	34,914
Corps of Engineers	710	684	785	731									2,910	2,269
Other Defense Civil Programs	5,354	10,121	5,360	6,191									27,026	21,615
Environmental Protection Agency	831	829	777	826									3,263	2,922
Executive Office of the President	33	33	33	32									131	119
General Services Administration	46	-54	-17	-27									-52	528
<b>International Assistance Programs:</b>														
International Security Assistance	513	2,093	1,100	3,526									7,232	4,641
Multilateral Assistance	(**)	1	235	46									282	297
Agency for International Development	1,095	816	626	457									2,993	2,677
Other	-176	-564	-2,667	-1,540									-4,947	-3,285
National Aeronautics and Space Administration	1,715	1,793	2,346	1,318									7,171	6,364
National Science Foundation	679	595	549	578									2,401	2,196
Office of Personnel Management	9,587	8,470	8,102	9,445									35,604	34,393
Small Business Administration	81	81	104	85									352	431
<b>Social Security Administration:</b>														
Federal Old-Age and Survivors Insurance Trust Fund (Off-Budget)	76,709	76,640	76,503	78,344									308,196	289,336
Federal Disability Insurance Trust Fund (Off-Budget)	12,285	12,259	11,774	12,402									48,720	48,517
Other	4,688	9,303	4,896	4,820									23,707	18,958
<b>Independent Agencies:</b>														
Deposit Insurance Fund	367	124	-989	266									-232	-2,687
FSLIC Resolution Fund	-2	-1	-2	-1									-6	-7
<b>Postal Service:</b>														
<b>Off-Budget:</b>														
Public Enterprise Funds	545	788	-690	-696									-54	-115
Other	38	20	1	208									267	58
Other	.....	.....	.....	57									57	.....
Tennessee Valley Authority	-188	-95	36	-180									-427	-86
Other	2,399	2,532	2,658	2,105									9,694	13,692
<b>Undistributed Offsetting Receipts:</b>														
Employer Share, Employee Retirement	-22,480	-7,025	-7,112	-6,895									-43,511	-39,875
Interest Received by Trust Funds	3,223	-2,183	-59,103	-1,716									-59,779	-63,042
Rents and Royalties on the Outer Continental Shelf Lands	-441	-295	-672	-480									-1,889	-2,364
Other	(**)	(**)	(**)	(**)									(**)	(**)
<b>Totals This Year:</b>														
<b>Total Outlays</b>	<b>379,988</b>	<b>434,024</b>	<b>349,091</b>	<b>404,881</b>									<b>1,567,985</b>	<b>.....</b>
<b>(On-Budget)</b>	<b>300,962</b>	<b>345,901</b>	<b>302,065</b>	<b>326,438</b>									<b>1,275,366</b>	<b>.....</b>
<b>(Off-Budget)</b>	<b>79,026</b>	<b>88,122</b>	<b>47,026</b>	<b>78,443</b>									<b>292,619</b>	<b>.....</b>
<b>Total-Surplus (+) or Deficit (-)</b>	<b>-134,467</b>	<b>-208,838</b>	<b>-13,286</b>	<b>-32,593</b>									<b>-389,185</b>	<b>.....</b>
<b>(On-Budget)</b>	<b>-119,867</b>	<b>-190,253</b>	<b>-42,394</b>	<b>-44,892</b>									<b>-397,406</b>	<b>.....</b>
<b>(Off-Budget)</b>	<b>-14,600</b>	<b>-18,585</b>	<b>29,108</b>	<b>12,299</b>									<b>8,221</b>	<b>.....</b>
<b>Total Borrowing from the Public</b>	<b>159,836</b>	<b>125,462</b>	<b>65,767</b>	<b>41,898</b>									<b>392,964</b>	<b>339,732</b>
<i>Total-Outlays Prior Year</i>	<i>353,183</i>	<i>410,864</i>	<i>326,123</i>	<i>331,299</i>									<i>.....</i>	<i>1,421,469</i>
<i>(On-Budget)</i>	<i>279,122</i>	<i>328,697</i>	<i>284,536</i>	<i>256,096</i>									<i>.....</i>	<i>1,148,451</i>
<i>(Off-Budget)</i>	<i>74,061</i>	<i>82,166</i>	<i>41,588</i>	<i>75,203</i>									<i>.....</i>	<i>273,018</i>
<i>Total-Surplus (+) or Deficit (-) Prior Year</i>	<i>-100,491</i>	<i>-204,903</i>	<i>-13,539</i>	<i>8,681</i>									<i>.....</i>	<i>-310,252</i>
<i>(On-Budget)</i>	<i>-88,207</i>	<i>-189,361</i>	<i>-41,537</i>	<i>-2,259</i>									<i>.....</i>	<i>-321,364</i>
<i>(Off-Budget)</i>	<i>-12,284</i>	<i>-15,541</i>	<i>27,997</i>	<i>10,940</i>									<i>.....</i>	<i>11,112</i>

Note: Details may not add to totals due to rounding.

(\*\*) Less than absolute value of \$500,000

... No Transactions

**Table 8. Trust Fund Impact on Budget Results and Investment Holdings as of January 31, 2020**

[\$ millions]

Classification	This Month			Fiscal Year to Date			Securities Held as Investments Current Fiscal Year		
	Receipts	Outlays	Excess	Receipts	Outlays	Excess	Beginning of		Close of
							This Year	This Month	
<b>Trust Receipts, Outlays, and Investments Held:</b>									
Airport and Airway	1,874	1,356	518	5,454	5,683	-230	15,018	15,355	15,374
Black Lung Disability	16	13	3	54	65	-11	.....	.....	.....
Federal Disability Insurance	13,838	12,402	1,436	46,830	48,720	-1,890	96,520	93,138	94,566
Federal Employees Life and Health	.....	173	-173	.....	303	-303	76,001	75,871	75,695
Federal Employees Retirement	3,519	7,958	-4,439	27,794	30,649	-2,856	960,338	961,693	957,494
Federal Hospital Insurance	33,532	39,329	-5,797	111,126	121,117	-9,991	.....	.....	.....
Federal Old-Age and Survivors Insurance	88,719	78,344	10,374	318,520	308,196	10,324	2,804,396	2,804,355	2,814,717
Federal Supplementary Medical Insurance	41,394	59,190	-17,796	159,437	175,163	-15,726	104,716	108,069	89,053
Hazardous Substance Superfund	110	113	-2	527	494	33	5,251	5,313	5,294
Highways	3,896	3,482	415	13,199	17,843	-4,644	28,192	25,225	25,088
Military Advances	3,812	2,227	1,585	17,110	11,836	5,274	.....	.....	.....
Military Retirement	3,323	5,203	-1,880	108,904	25,347	83,557	827,414	922,115	920,193
Railroad Retirement	1,714	1,527	187	4,704	5,280	-576	2,606	2,246	2,618
Unemployment	3,023	3,423	-400	9,710	10,766	-1,056	84,361	83,826	81,737
Veterans Life Insurance	-3	78	-81	52	249	-198	3,815	3,701	3,624
All Other Trust	423	386	37	2,020	1,651	369	237,286	231,622	227,672
<b>Total Trust Fund Receipts and Outlays and Investments Held from Table 6-D</b>	<b>199,190</b>	<b>215,202</b>	<b>-16,012</b>	<b>825,440</b>	<b>763,363</b>	<b>62,077</b>	<b>5,245,914</b>	<b>5,332,527</b>	<b>5,313,124</b>
Less: Interfund Transactions	72,522	72,522	.....	395,350	395,350	.....	.....	.....	.....
Trust Fund Receipts and Outlays on the Basis of Tables 4 & 5	126,668	142,680	-16,012	430,089	368,013	62,077			
<b>Total Federal Fund Receipts and Outlays</b>	<b>245,826</b>	<b>262,407</b>	<b>-16,581</b>	<b>748,917</b>	<b>1,200,178</b>	<b>-451,261</b>			
Less: Interfund Transactions	206	206	.....	206	206	.....			
Federal Fund Receipts and Outlays on the Basis of Table 4 & 5	245,620	262,201	-16,581	748,710	1,199,972	-451,261			
<b>Net Budget Receipts &amp; Outlays</b>	<b>372,288</b>	<b>404,881</b>	<b>-32,593</b>	<b>1,178,800</b>	<b>1,567,985</b>	<b>-389,185</b>			

Note: Details may not add to totals due to rounding.

Note: Interfund receipts and outlays are transactions between Federal funds and trust funds such as Federal payments and contributions, and interest and profits on investments in Federal securities. They have no net effect on overall budget

receipts and outlays since the receipt side of such transactions is offset against budget outlays. In this table, Interfund receipts are shown as an adjustment to arrive at total receipts and outlays of trust funds respectively.  
... No Transactions

**Table 9. Summary of Receipts by Source, and Outlays by Function of the U.S. Government, January 2020 and Other Periods**

[\$ millions]

Classification	This Month	Fiscal Year to Date	Comparable Period Prior Fiscal Year
<b>Receipts</b>			
Individual Income Taxes	216,660	601,518	569,931
Corporation Income Taxes	10,492	75,905	59,863
Social Insurance and Retirement Receipts:			
Employment and General Retirement	117,604	400,328	378,776
Unemployment Insurance	3,019	8,620	8,922
Other Retirement	422	1,746	1,483
Excise Taxes	6,308	26,875	36,204
Estate and Gift Taxes	2,361	6,988	6,126
Customs Duties	6,918	28,064	24,455
Miscellaneous Receipts	8,506	28,756	25,457
<b>Total</b>	<b>372,288</b>	<b>1,178,800</b>	<b>1,111,217</b>
<b>Net Outlays</b>			
National Defense	53,432	249,773	229,455
International Affairs	5,077	16,983	14,796
General Science, Space, and Technology	2,414	11,518	10,320
Energy	264	1,744	-246
Natural Resources and Environment	3,385	14,657	11,473
Agriculture	1,921	25,025	25,228
Commerce and Housing Credit	1,248	9,869	-4,154
Transportation	6,706	31,627	28,755
Community and Regional Development	2,118	9,040	10,620
Education, Training, Employment, and Social Services	12,149	37,535	36,036
Health	49,320	199,132	189,057
Medicare	87,096	252,642	204,820
Income Security	39,080	156,130	146,198
Social Security	90,745	356,904	337,842
Veterans Benefits and Services	18,026	79,931	67,151
Administration of Justice	5,632	23,329	22,211
General Government	1,945	6,466	5,298
Net Interest	31,698	131,078	128,847
Undistributed Offsetting Receipts	-7,375	-45,399	-42,239
<b>Total</b>	<b>404,881</b>	<b>1,567,985</b>	<b>1,421,469</b>

Note: Details may not add to totals due to rounding.

# Explanatory Notes

## 1. Flow of Data into Monthly Treasury Statement

The *Monthly Treasury Statement (MTS)* is assembled from data in the central accounting system. The major sources of data include monthly accounting reports by Federal entities and disbursing officers, and daily reports from the Federal Reserve banks. These reports detail accounting transactions affecting receipts and outlays of the Federal Government and off-budget Federal entities, and their related effect on the assets and liabilities of the U.S. Government. Information is presented in the *MTS* on a modified cash basis.

## 2. Notes on Receipts

Receipts included in the report are classified into the following major categories: (1) budget receipts and (2) offsetting collections (also called applicable receipts). Budget receipts are collections from the public that result from the exercise of the Government's sovereign or governmental powers, excluding receipts offset against outlays. These collections, also called governmental receipts, consist mainly of tax receipts (including social insurance taxes), receipts from court fines, certain licenses, and deposits of earnings by the Federal Reserve System. Refunds of receipts are treated as deductions from gross receipts.

Offsetting collections are from other Government accounts or the public that are of a business-type or market-oriented nature. They are classified into two major categories: (1) offsetting collections credited to appropriations or fund accounts, and (2) offsetting receipts (i.e., amounts deposited in receipt accounts). Collections credited to appropriation or fund accounts normally can be used without appropriation action by Congress. These occur in two instances: (1) when authorized by law, amounts collected for materials or services are treated as reimbursements to appropriations and (2) in the three types of revolving funds (public enterprise, intra governmental, and trust); collections are netted against spending, and outlays are reported as the net amount.

Offsetting receipts in receipt accounts cannot be used without being appropriated. They are subdivided into two categories: (1) proprietary receipts - these collections are from the public and they are offset against outlays by agency and by function, and (2) intra governmental funds - these are payments into receipt accounts from Governmental appropriation or fund accounts. The transactions may be intrabudgetary when the payment and receipt both occur within the budget or from receipts from off-budget Federal entities in those cases where payment is made by a Federal entity whose budget authority and outlays are excluded from the budget totals.

Intrabudgetary transactions are subdivided into three categories: (1) interfund transactions, where the payments are from one fund group (either Federal funds or trust funds) to a receipt account in the other fund group; (2) Federal intrafund transactions, where the payments and receipts both occur within the Federal fund group; and (3) trust intrafund transactions, where the payments and receipts both occur within the trust fund group.

Offsetting receipts are generally deducted from budget authority and outlays by function, by subfunction, or by agency. There are four types of receipts, however, that are deducted from budget totals as undistributed offsetting receipts. They are: (1) agencies' payments (including payments by off-budget Federal entities) as employers into employees retirement funds, (2) interest received by trust funds, (3) rents and royalties on the Outer Continental Shelf lands, and (4) other interest (i.e., interest collected on Outer Continental Shelf money in deposit funds when such money is transferred into the budget).

## 3. Notes on Outlays

Outlays are generally accounted for on the basis of checks issued, electronic funds transferred, or cash payments made. Certain outlays do not require issuance of cash or checks. An example is charges made against appropriations for that part of employees' salaries withheld for taxes or savings bond allotments - these are counted as payments to the employee and credits for whatever purpose the money was withheld. Outlays are stated net of offsetting collections (including receipts of revolving and management funds) and of refunds. Interest on the public debt (public issues) is recognized on the accrual basis. Federal credit programs subject to the Federal Credit Reform Act of 1990 use the cash

basis of accounting and are divided into two components. The portion of the credit activities that involve a cost to the Government (mainly subsidies) is included within the budget program accounts. The remaining portion of the credit activities are in non-budget financing accounts. Outlays of off-budget Federal entities are excluded by law from budget totals. However, they are shown separately and combined with the on-budget outlays to display total Federal outlays.

## 4. Processing

The data on payments and collections are reported by account symbol into the central accounting system. In turn, the data are extracted from this system for use in the preparation of the *MTS*.

There are two major checks which are conducted to assure consistency of the data reported:

1. Verification of payment data. The monthly payment activity reported by Federal entities on the Statements of Transactions is compared to the payment activity of Federal entities as reported by disbursing officers.
2. Verification of collection data. Reported collections appearing on Statements of Transactions are compared to deposits as reported by Federal Reserve Banks.

## 5. Other Sources of Information About Federal Government Financial Activities

- *A Glossary of Terms Used in the Federal Budget Process, 2005* (Available from the U.S. Government Accountability Office, at calling 202-512-6000. This glossary provides a basic reference document of standardized definitions of terms used by the Federal Government in the budget making process).
- *Daily Treasury Statement* (Available on the internet at <http://www.fms.treas.gov/dts/>). The *Daily Treasury Statement* is published each working day of the Federal Government and provides data on the cash and debt operations of the Treasury.
- *Monthly Statement of the Public Debt of the United States* (Available on the internet at <http://www.treasurydirect.gov/govt/reports/pd/mspd/mspd.htm>). This publication provides detailed information concerning the public debt.
- *Treasury Bulletin* (Available from GPO, Washington, D.C. 20401 on a subscription or single copy and on the internet at [http://www.fiscal.treasury.gov/fsreports/rpt/treasBulletin/treasBulletin\\_home.htm](http://www.fiscal.treasury.gov/fsreports/rpt/treasBulletin/treasBulletin_home.htm)). Quarterly, contains a mix of narrative, tables, and charts on Treasury issues, Federal financial operations, international statistics, and special reports.
- *Budget of the United States Government, Fiscal Year 20\_\_* (Available from GPO, Washington, D.C. 20401 on a subscription basis only and on the internet at <http://www.access.gpo.gov/usbudget>). This publication is a single volume which provides budget information and contains:
  - *Appendix, The Budget of the United States Government, FY 20\_\_*
  - *The United States Budget in Brief, FY 20\_\_*
  - *Analytical Perspectives*
  - *Historical Tables*
- *Combined Statement of Receipts, Outlays, and Balances of the United States Government* (Available from Bureau of the Fiscal Service, U.S. Department of Treasury, Washington, D.C. 20227 and on the internet at [http://www.fiscal.treasury.gov/fsreports/rpt/combStmt/combStmt\\_home.htm](http://www.fiscal.treasury.gov/fsreports/rpt/combStmt/combStmt_home.htm)). This report includes budgetary results at the summary level and presents individual receipt and appropriation accounts at the detail level.

**Scheduled Release**

**The release date for the February 2020 Statement  
will be 2:00 p.m. EST March 11, 2020.**

Internet service subscribers can access the current issue of the Monthly Treasury Statement through the  
Bureau of the Fiscal Service's website:

[http://www.fiscal.treasury.gov/fsreports/rpt/mthTreasStmnt/mthTreasStmnt\\_home.htm](http://www.fiscal.treasury.gov/fsreports/rpt/mthTreasStmnt/mthTreasStmnt_home.htm)